

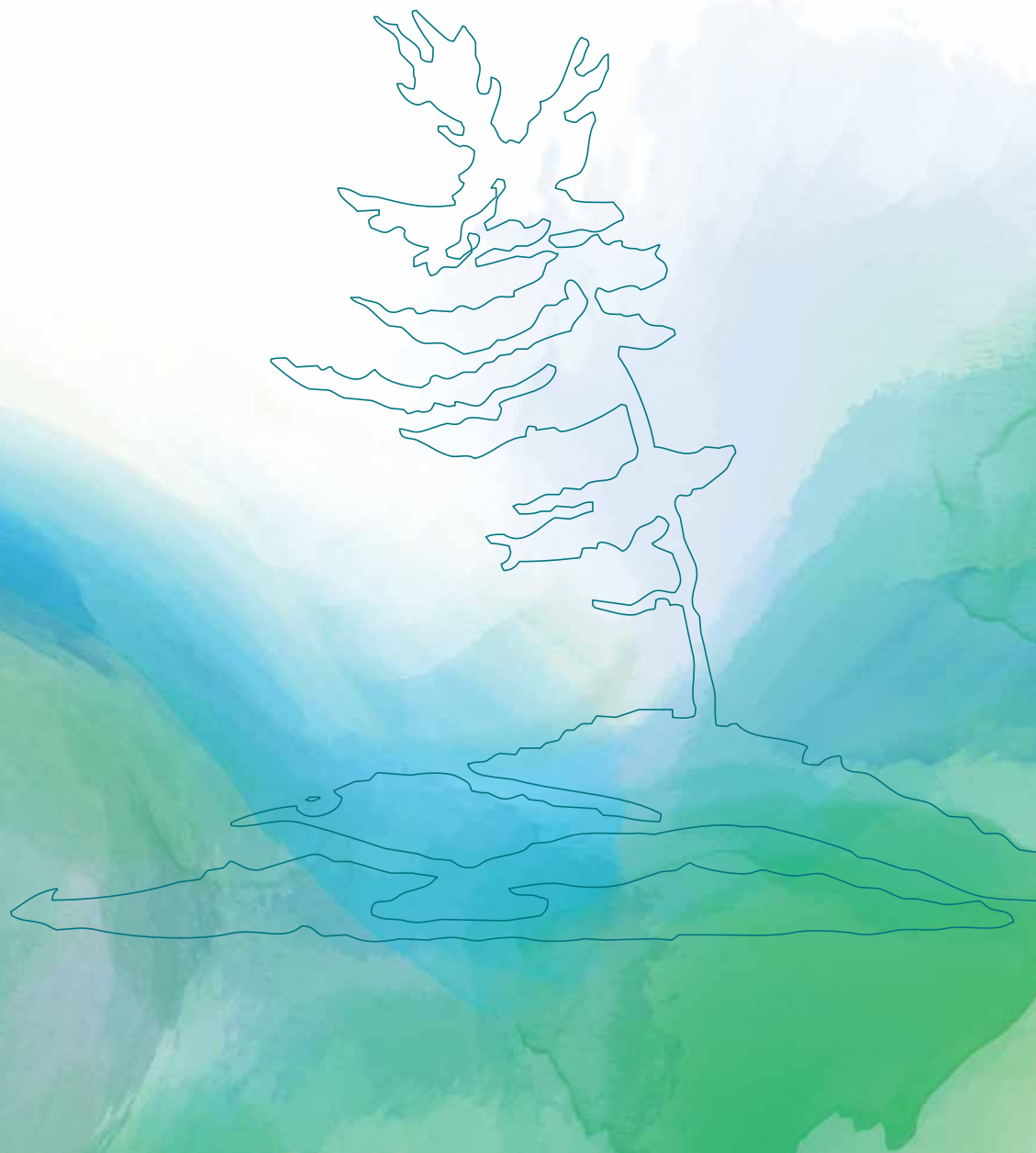
NIPISSING

U N I V E R S I T Y

ADMISSIONS 2021

nipissingu.ca/futurestudents

Right where
you belong



Focus on Success

A Small School with Big Opportunities

Nipissing's focus on student success and experience is recognized with top rankings in Canada in the areas of student support, student experience, faculty, and residences.

Enjoy learning in a high quality academic environment that is student-focused and based on personal teaching practices, innovative approaches to learning and a growing research culture. Interested students have the unique opportunity to assist with faculty research as an undergraduate student.



#1 in
RESIDENCE LIVING
among universities
in Canada
- *Maclean's 2020*



#1 in
**MENTAL HEALTH
SERVICES**
among universities
in Canada
- *Maclean's 2020*

TOP 3
STUDENT LIFE STAFF
in Canada
- *Maclean's 2020*

The NU Promise

Success Starts with You

The NU Promise is a multi-year program designed to enrich your student experience at Nipissing University by helping you navigate life as a Laker and your university journey. The NU Promise Program allows you to work alongside a Student Success Coordinator to help you navigate three core pillars that students will engage with: Academic Success, Engagement and Self-Development, and Career Development.

If you have not secured career-related employment 6 months after completing your undergraduate degree, Nipissing invites you to return for another year, tuition-free for up to 30 additional credits.

For details visit: nipissingu.ca/nupromise

Attention
new
students

Over
90%
of Nipissing students
find employment within
6 months of graduating
compared to the Ontario
University average
of 86.98%

TOP 3
in **STUDENT**
SATISFACTION

among primarily undergraduate
Ontario universities
– Maclean's 2020

Nipissing alumni
live in
54 countries
and are available
to mentor current
students through NU's
career networking
platform.



About North Bay	2	Scholarships	18	Indigenous Education	
Campus Community	4	Financial Planning	20	Degree/Diploma Programs	28
Student Union	4	Program Options	22	Admission, Important Dates	30
Athletics	6	Other Pathways to a Degree	24	How to Apply Full-time	32
Student Support	9	Experiential Learning	25	Out of Province Admission Requirements	33
Residence	12	Schulich School of Education	26	Admissions Chart	34
Campus Map	16			Concurrent Education	36

City with a View



The University is situated on the traditional territory of Nipissing First Nation, and within the Robinson-Huron Treaty of 1850. We also acknowledge the nearby Anishnabek communities of Dokis First Nation and Temagami First Nation.

The City of North Bay, Ontario, is nestled between Lake Nipissing and Trout Lake and is surrounded by numerous protected natural areas, heritage forest parks and historical sites. Approximately a 3½ hour drive from either Toronto or Ottawa, our friendly and inviting city is a popular year round destination. Offering plenty of activities, amenities and services to meet your student needs, North Bay's vibrancy is only exceeded by its hospitality.

North Bay Recreation

In addition to the activities available to you on campus, North Bay offers so much more:

- YMCA with pool
- Arenas (Memorial Gardens hosts our local OHL team, the Battalion)
- Downhill ski and snowboarding hills (one in town, and a second within a 45 minute drive)
- Nordic ski clubs
- Biking paths and walking trails
- Golf courses
- Tennis courts
- Public beaches ideal for swimming and canoeing
- Capitol Centre (features theatre performances and concerts)
- Art galleries
- North Bay Museum
- Community festivals and events

North Bay has a
**VIBRANT ARTS
COMMUNITY.**

Check out a sampling of
the local arts scene at
[creativeindustriesnorth.ca/
media](http://creativeindustriesnorth.ca/media)

Your
student card
doubles as a city bus
pass and is an easy
way to get around
town.



North Bay at a glance:
cityofnorthbay.ca

51,553

population of North Bay
(2016)



Campus sits on

720
acres

of Canadian Shield
forest

ski hill and terrain park within city limits



North Bay is host to many different festivals and events throughout the year, including Pride.



17.5 km

of paved multi-use trails
throughout the city

Your Campus Community

87%

of Nipissing students
come from outside of
North Bay

Nipissing offers you a friendly campus and a commitment to providing one of the best undergraduate experiences among universities in Canada. Enjoy a more personalized approach to education with supportive professors and small class sizes. Take advantage of the many opportunities to get involved and explore your interests. Nipissing allows you to decide what shape your life will take and gives you access to all the academic, financial, and personal support systems you need.

Student Union (NUSU)

info@nusu.com

(705) 474-3450 ext. 4801

nusu.com

[f](#) [i](#) [t](#) @NUSUtalks

NIPISSING UNIVERSITY STUDENT UNION

NUSU

Being away from home or starting a new chapter of your life can be overwhelming. At the Nipissing University Student Union, we are dedicated to ensuring you are supported through academic excellence and social growth. NUSU is run by four elected student Executives who work with staff to represent approximately 5000 members on-campus and long-distance students. Being involved on and off campus is one of the best ways to make the most of your university experience.

As an elected board, NUSU Executives and Directors provide a full range of services (financial and academic), activities, events, and political advocacy to improve the student experience including:

- NUSU Student Centre
- Health and Dental Plan
- Student Food Bank
- Clubs and Societies
- Community Involvement
- Frosh Week and Shine Day
- Volunteer Opportunities
- Academic and Government Advocacy

For a list of
clubs and societies,
or to find out how
to start your own,
visit
nusu.com/clubs





The NUSU Student Centre

Situated at the corner of College Drive and Monastery Road, the Student Union Building will be a defining feature on the approach to campus, welcoming students and visitors while symbolizing the importance of the student body at Nipissing University.

Opening in 2021, this building will feature study nooks, a two-storey atrium, a restaurant, nightclub, courtyard, outdoor patio, and study rooms. The Student Centre will be used for social and academic purposes. This 32,000 square-foot structure will be a great place to study, connect, make memories and attend concerts and seminars. We look forward to seeing you there!



Robert J. Surtees Student Athletics Centre

Whether you are a varsity athlete, gym enthusiast or weekend warrior, our state-of-the art athletics centre offers everything you need to stay active. The building is located in the heart of campus next to our new artificial turf field, making it easy to cheer on our Lakers athletes. Did we mention access to this facility is included in your student fees?

- 3 gymnasiums
- 2 international squash courts
- 3 fitness rooms with weekly fitness classes in a variety of disciplines
- Cardio studio
- Weight room
- Turf field
- 20 km of hiking and snowshoe trails
- Groomed Nordic ski trails
- Natural waterfall right on campus



Nipissing Lakers
hosted the
**2019 OUA
Nordic Skiing
Championships**
on campus



RINGETTE
was invented in
North Bay
by Sam Jacks
in 1963

For more details or
to get in touch with
a coach for athletic
recruitment visit
nulakers.ca

Sports Teams

For a complete list of sports and details on how to register, visit nulakers.ca

Intramural Sports

Exercise and healthy competition always help to clear the mind. Nipissing's Athletics Department offers a wide range of intramural activities to keep you on your game. Teams include:

- Basketball
- Dodgeball
- Flag Football
- Hockey
- Slo-Pitch
- Soccer
- Volleyball
- Ultimate Frisbee

Club Sports

Club sports are available to all Nipissing students and are both recreational and competitive.

- Cheerleading
- Women's Ringette
- Dance Pak

Varsity-Club Sports

- Men's Lacrosse

Varsity Teams

Go Lakers! Our varsity athletes always bring their A-game. Get your friends together and come out to cheer on your favourite teams.

We have both men's and women's varsity teams competing at the OUA level in:

- Basketball
- Cross-country Running
- Hockey
- Nordic Skiing
- Rowing
- Soccer
- Volleyball



Due to the generous contributions of our donors, the multi-use turf field meets FIFA standards and is located adjacent to the R.J. Surtees Athletics Centre.

Home of the
LAKERS

Everyone is welcome to attend and participate in the annual Powwow in September. Celebrate and share Indigenous culture and the diversity of our community.



Located in the heart of campus, the Harris Learning Library features naturally lit and large open spaces for studying, collaborating and connecting.



Near North Voices is North Bay's university-community choir. Membership is open to students, faculty, staff and the community. Visit nearnorthvoices.com for more info.

Student Support

#1 in
STUDENT SERVICES
among universities
in Canada
– Maclean's 2020

TOP 3
in **STUDENT SATISFACTION**
in primarily undergraduate
universities in Canada
– Maclean's 2020

You can count on our support – academically, culturally, financially and personally. Student Development and Services is an excellent resource that will help you maximize your success.

Academic Advising

nipissingu.ca/academicadvising

Our primary focus is to enhance your learning experience and development. We will help you to:

- explore academic opportunities;
- address difficulties; and
- make the best informed and responsible decisions regarding your academic programs, priorities and goals.



Accessibility Services

sas@nipissingu.ca • nipissingu.ca/sas

Student Accessibility Services assists students with permanent or temporary disabilities. If you have (or suspect that you have) a disability, we encourage you to contact us to ask about test and exam accommodation, distraction-reduced working and testing areas, note-taking support, adaptive technology and assistive software, alternate format reading materials, and counselling or tutorial support.

Enji giigdoyang, the Office of Indigenous Initiatives

indigenousprograms@nipissingu.ca • nipissingu.ca/indigenous

In the Nbisiing dialect of Anishnaabemwin, Enji giigdoyang means “where we come to meet, discuss and talk about things.” We enhance the educational experience through a holistic approach to academic, personal, and cultural support and offer a range of programs. We honour one another’s life experiences and invite you to connect with our campus community and guests to the university in events throughout the year. We offer:

- Enji giigdoyang Student Lounge
- Indigenous Week and Enji giigdoyang Speaker Series
- Visiting Elders
- Experiential Learning Opportunities
- Academic, Personal, and Cultural Supports
- Indigenous Mentorship Programs



Equity Centre

equitycentrenu@nipissingu.ca • (705) 474-3450 ext. 4213

The Equity Centre is a student-run safe space on campus where students can hang out, learn, or help organize events and campaigns that raise awareness of equity issues which impact the diverse communities at Nipissing University. The Centre provides education and resources, advocates on behalf of students, and promotes allyship on campus. The Equity Centre and its events are open to everyone.

International Initiatives

myinternational@nipissingu.ca • nipissingu.ca/international

Study abroad or internationalize your degree at home. We offer support services and programs to assist with intercultural development and integration, creating experiences that foster global citizenship. Upper year students enjoy our exchange partnerships with Australia, Barbados, China, Finland, France, Germany, India, Ireland, Japan, Netherlands, Norway, South Africa, South Korea, Sweden, and the United Kingdom.

Travel abroad with one of our 20 partner schools



Health Centre

nipissingu.ca/healthcentre • (705) 474-7600 ext. 5261

A medical team is in attendance at the Campus Health Centre and available to all students Monday to Friday. The Campus Health Centre provides quality services and health care delivery by a licensed physician and nurses.

Multi-Faith Space

Room H340

With a diverse community studying and working at Nipissing, the University has developed the Multi-Faith Space, offering an inclusive space on campus for people to practice all religions. The purposeful absence of any religious icons, symbols, or resources creates a neutral environment so individuals can use the space for a safer and comfortable place for prayer, meditation and reflection.



Sexual Violence Prevention and Education

svsupport@nipissingu.ca • nipissingu.ca/sexualviolence

Nipissing University is committed to creating and maintaining a safe environment for all students. Services for survivors include: navigation of services on and off campus, assistance with arranging academic accommodations, and help understanding reporting options. Additionally, there are free workshops on consent, healthy relationships, and bystander intervention for all students.

Student Counselling

counselling@nipissingu.ca • nipissingu.ca/counselling

Student Counselling Services offers free personal counselling services, specialized therapeutic groups, referral services, and wellness events to all students. We endeavor to do all we can to help support students in achieving positive mental and emotional wellness.

Student Intervention Support

sis@nipissingu.ca • nipissingu.ca/nuperspective

This support is offered to students who may be experiencing difficulty accessing the appropriate services, require a referral to services, require further collaboration within their current support services, or need assistance transitioning to or from the University (e.g. returning after being admitted to the hospital, registering again after withdrawing for mental health reasons, etc.). The relationship between the SIS staff and the student is collaborative, goal-oriented, supportive and voluntary.

Student Learning and Transitions

slt@nipissingu.ca • nipissingu.ca/slt

Student Learning and Transitions (SLT) supports students' academic and personal success from orientation to graduation. These may include one-on-one consultations, group workshops or tutorials, peer-to-peer support and tutoring, or referral services. SLT's transition programs seek to ease the multiple transitions that occur throughout a student's post-secondary experience, including those who have entered through non-traditional pathways and include facilitated programs, campus activities, and events that promote academic and social integration into the Nipissing University Lakers community.



Apply For Residence



A private bedroom of your own

Our top-rated residences will make you feel right at home. You can count on making fast friends within your residence community, and enjoy the luxury of a private room of your own!

Our student leaders, Residence Dons and award-winning residence staff give tutorials on everything from the basics of laundry and cooking to making connections within the community. Our Community Assistants and Academic Dons are additional support for residents in each complex to help with a smooth transition into university.

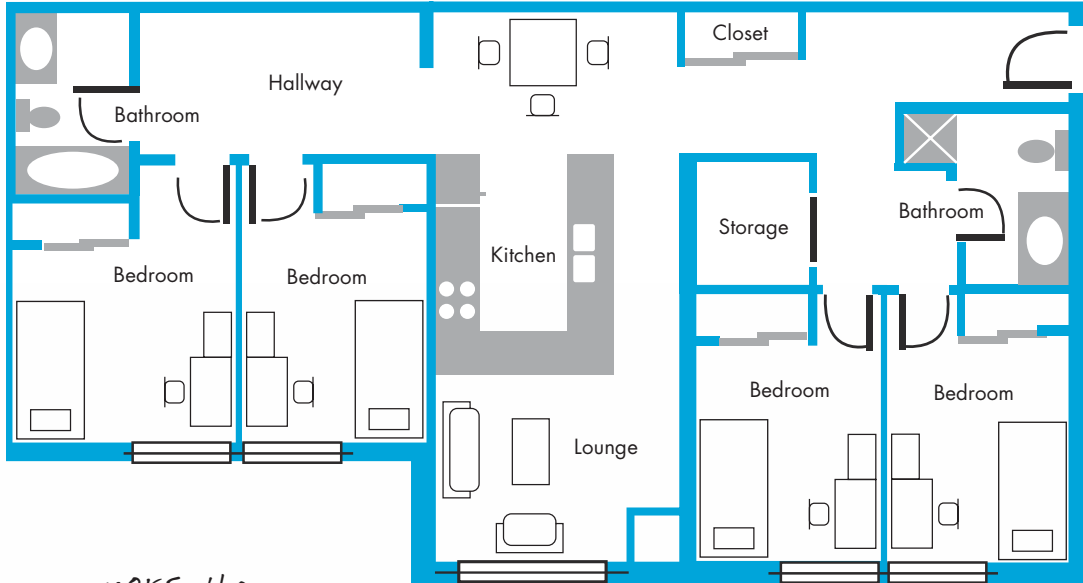
For full details, visit nipissingu.ca/residence



Residences are all a short walk to class, or you can hop on the bus for an even shorter bus ride. See page 17 for a campus map.

Suite-style Residences

sample layout



Governors House



Chancellors House



Founders House

Guaranteed Single Rooms in Residence

If you are a current secondary school student who receives full-time admission by **May 27, 2021**, and you meet the residence application and deposit deadline of **June 1, 2021**, you are guaranteed a single room in a suite-style residence. Each fully-furnished suite accommodates four students and features:

- 4 private bedrooms
- Furnished kitchen with fridge and stove; living room; dining area
- 2 full bathrooms
- Local telephone; and cable TV hookup in bedrooms and living room
- Wireless and wired high-speed internet access
- Access to a laundry room; common areas; and lounge

Living Learning Communities

Live with friends who like the same things you do in one of our four Living Learning Communities (LLC). The communities bring together students who share similar interests, and provide an immediate support network.

- Balance: physical, mental, and spiritual well-being
- Connect: global citizenship and cultural education
- LEAD (Leaders Emerging through Active Development): leadership
- Mosaic: arts-based, including music, drama, crafts, fine arts, digital and more.

Balance



Connect



Mosaic



LEAD



Therapy dog visits reduce stress

TRC – Townhouse Residence Complex

These residences are usually reserved for upper year students. The TRC is located beside the main academic building at the top of College Drive and accommodates six students to a house. Built on two levels, each fully-furnished townhouse has:

- Three private bedrooms and half bathroom on the main floor
- Three private bedrooms and a full bathroom on the upper level
- Kitchen with fridge and stove
- Dining area
- Living room and loft

Off Campus Living

offcampusliving@nipissingu.ca
ocl.nipissingu.ca

Off Campus Living is a program designed to assist students with sourcing housing off campus and is a point of contact for students who are in need of resources to help with everyday living in the community.

Townhouse Residences



When the weather gets cold enough, the residence skating rink is flooded for students to skate for fun or play a friendly game of hockey!

Residence events and activities help you form lifelong friendships and socialize all year long.



Campus Map

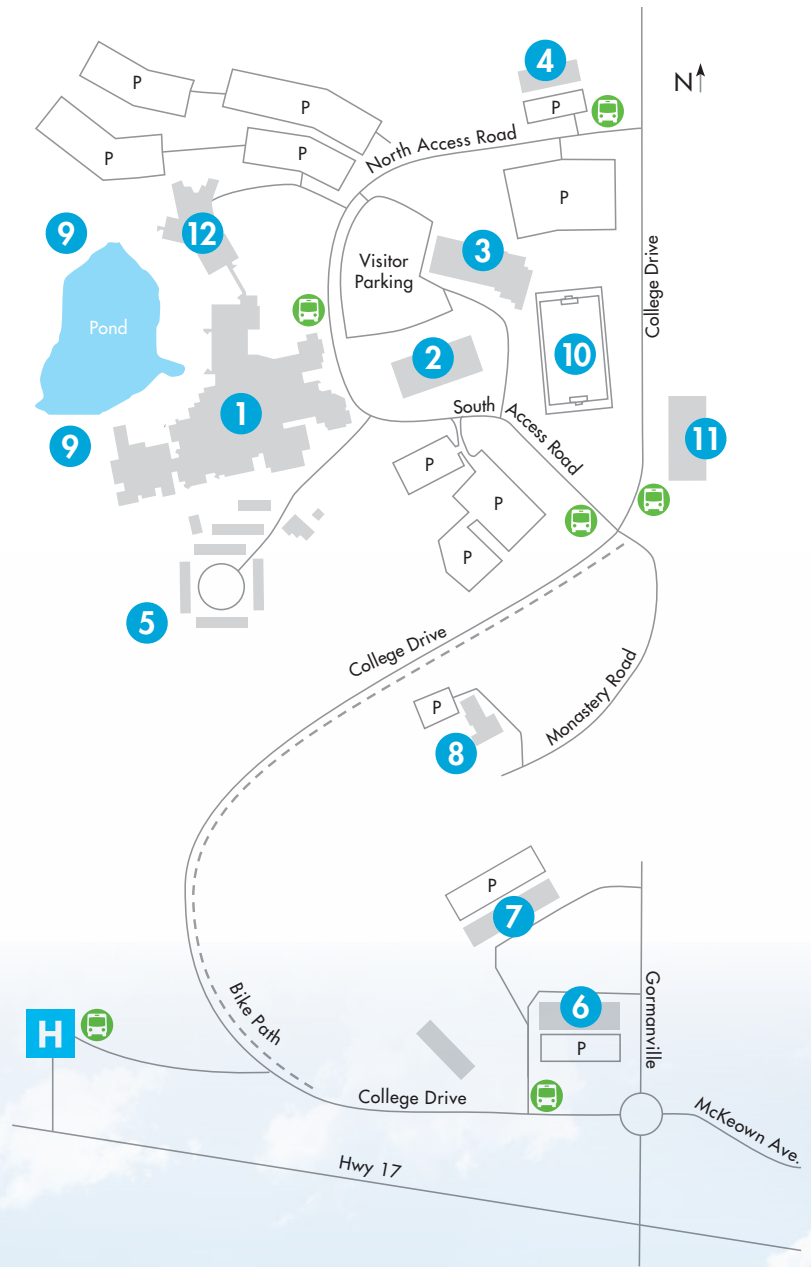
Check out our
interactive map
with virtual tours
and photos:
map.nipissingu.ca

We are proud to
share our campus with
Canadore College,
which adds to the
vibrancy of our
campus community.

20 km
of hiking/Nordic ski
trails on campus



- 1 Nipissing Main Building
- 2 Harris Learning Library
- 3 R.J. Surtees Student Athletics Centre
- 4 Governors Residence
- 5 Townhouse Residence Complex (TRC)
- 6 Founders Residence
- 7 Chancellors Residence
- 8 Monastery Hall (Fine Arts)
- 9 Paths to 20 km of trails
- 10 Turf Field
- 11 New Student Centre, Opening 2021
- 12 Canadore College
-  City Bus Stop



Finance Your Education



If you get the marks, you get the money!

Your final grades make a big difference. Scholarship averages are calculated using your best six final 4U/4M marks (or final IB score including bonus points) completed as of June 30, 2021. All Canadian applicants applying directly from secondary school will be considered automatically for guaranteed entrance scholarships – no application needed!

Contact the Financial Services Office for more information at finaid@nipissingu.ca

Guaranteed Entrance Scholarships

No application needed!

Admission Average [†]	Year 1	Average needed to keep scholarship [‡]	Year 2	Year 3	Year 4
President's Scholarships					
90% + (36+ for IB)	FREE TUITION^Δ	*85% +	\$3000	\$3000	\$3000
Carl Sanders Annual Scholarships					
85-89% (33-35 for IB)	\$2500	90% +	\$1000	\$1000	\$1000
		85% +	\$750	\$750	\$750
80-84% (30-32 for IB)	\$1500	80-84%	\$500	\$500	\$500

[†] Average based on best six final 4U/4M courses or final IB score (including bonus points).

[‡] Based on annual grades on 24 credits in the Fall/Winter term.

* Students who do not meet the renewal requirements have the next Fall/Winter to regain eligibility.

^Δ Domestic tuition rate.

Note: Students are only eligible for President's and Carl Sanders Scholarship consideration for the first four years of study.

Awards and Bursaries

Apply for all high school entrance awards and bursaries with just one application, **even before you've received your Offer of Admission**. Complete and submit the application form by May 1 at nipissingu.ca/entranceawards

There are a number of awards and bursaries based on unique criteria:

- Financial need
- Demonstrated citizenship
- Volunteerism
- Your program of interest
- Home town

\$10,000 Chancellor's Awards

- Awarded to two first-year students
- Entering full-time undergraduate studies (first entry only)
- Minimum average of 85%, evidence of personal leadership activities and financial need
- Renewable at \$3,000 per year

\$7,000 Schulich Scholarships

- Awarded to selected full-time students entering the first year of an undergraduate degree program with a focus on education
- Concurrent Education, Bachelor of Physical and Health Education, or the Consecutive Bachelor of Education*
- Must have a minimum 80% average and at least one of the following: volunteer work; community involvement; or financial need.

*Please note: Students applying to the 2 year Consecutive Bachelor of Education program should apply for Schulich Scholarships by Jan 15.

\$500 – \$2,500 Entrance Bursaries and Awards

- Need-based awards and bursaries
- Entering undergraduate studies directly from secondary school

Other Financial Sources

- Apply for Government Grants and Loans (OSAP): ontario.ca/OSAP
- Apply to NUWork On-campus Work Study Program: nipissingu.ca/nuwork

For a complete list of scholarships, awards, bursaries, and other funding options, visit nipissingu.ca/bursaries

Apply for all awards with one application by
May 1

Nipissing has over
\$3.7 million
in scholarships, bursaries and awards available for students.

Student tip: Earn up to
\$1800
with an NUWork on-campus job.

To qualify for an NUWork position, you need to demonstrate financial need, so apply for funding sources like OSAP (even if you don't receive or accept it.)



Visit our online calculator for tuition and living expenses:
nipissingu.ca/tuition

Create a financial plan

A plan helps you achieve your goals on time and on budget. This information is provided for guidance only. These are estimated based on 2020-2021 costs of living on campus for the 8-month academic term and are subject to change from year to year.

Studying in North Bay		International Student Fees
Tuition	\$5,780 – \$7,275	\$19,325
Ancillary Fees (includes a City of North Bay transit pass)	\$1,464	\$1,944 ^Δ
Residence Accommodation	\$5,717 – \$6,425 [†]	\$5,717 – \$6,425 [†]
Food	\$2,600*	\$2,600*
Books and Supplies	\$500 – \$1,000	\$500 – \$1,000
Personal (does not include travel home)	\$1,700	\$1,700
Total	\$17,761 – \$20,464	\$31,786 – \$32,994

* Meal plan included in above cost for example purposes is \$1100/term, plus an estimated \$400 for weekend eating out or groceries.

† Does not include refundable \$100 damage deposit.

• Optional on-campus parking (depending on lot): \$161 – \$255

^Δ Includes UHIP (University Health Insurance Plan) for International Students (\$60/month x 8 months = \$480.00); subject to change



Optional Meal Plans

Optional meal plans are available to all students.

Annual Plan	\$2200	Valid until the end of the school year	Tax-free purchases (save 13%) + 5% discount
Semester Plan	\$1100	Valid until the end of the school year	Tax-free purchases (save 13%) + 5% discount
Swipe & Save Reloadable	Minimum \$100	No expiration	5% discount

For full details visit dineoncampus.ca/nipissingcanadore



Programs of Study

For more details visit:
nipissingu.ca/programs

Average Class Size
29

We have a variety of options to structure and customize your degree. For admissions requirements and degree designations (eg. BA vs BSc) please see the charts at the end of this book starting on page 34. For a full list of program offerings, please visit nipissingu.ca/programs

Undergraduate programs

- Anthropology
- Biology
- Business
 - Concentrations in: Accounting, Entrepreneurship and Innovation Leadership, Finance, Human Resources, International Business, and Marketing
- Child and Family Studies
- Classical Studies
- Commerce (only as a Dual Degree with BA or BSc)
- Computer Science
- Criminal Justice
 - Streams in: Corrections, Criminal Justice Studies, Criminology, and Policing
- Economics
- English Studies
- Environment and Physical Geography
- Environmental Biology and Technology
- Environmental Geography
- Fine Arts
- Gender Equality and Social Justice
- Geography
- History
- Indigenous Studies
- Liberal Arts
- Liberal Science
- Mathematics
- Nursing
- Philosophy
- Physical and Health Education
- Political Science
- Psychology
- Religions and Cultures
- Social Welfare and Social Development
- Social Work
- Sociology

Confused about the difference between a major, minor, honours specialization or specialization? Visit nipissingu.ca/programs to learn more.



See Nipissing Fine Arts student artwork on Instagram: [@nipissingfinearts](https://www.instagram.com/nipissingfinearts)



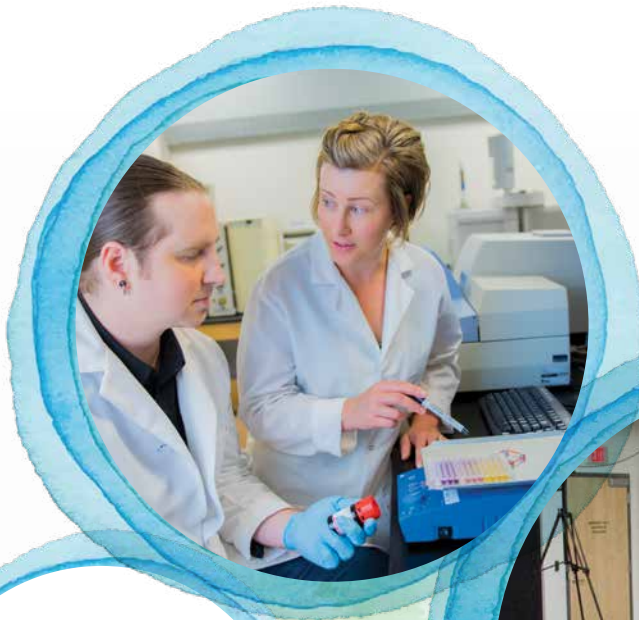
Dual Degrees

Bachelor of Commerce Dual Degree

If you would like to combine Business with an Arts or Science program, Nipissing offers you the opportunity to study both and complete a Bachelor of Arts or Bachelor of Science degree with a Bachelor of Commerce degree in as little as five years. This dual degree allows you to study a wider range of general interest and career specific subjects. For admissions requirements, please see page 35. For more information on getting a dual degree, please contact the Recruitment Office at nuinfo@nipissingu.ca or call (705) 474-3450 ext. 4200.

Concurrent Education

Nipissing offers a 6-year concurrent program that leads to you earning both an honours undergraduate degree in your discipline of choice (except Nursing and Social Work), and a Bachelor of Education degree. For further details, see page 26 or visit nipissingu.ca/concurrent



Motion capture equipment at the Centre for Physical and Health Education facility.



No specific degree or major is required for Law, Medical, MBA, or Veterinary schools.

Nipissing University offers all prerequisite courses required for admission to these programs.

Other Pathways to a Degree

College Transfer

Are you planning to head to college before university? Nipissing has a number of agreements and pathways in place to help you apply the credits you will earn in college towards a university degree. For more information, visit nipissingu.ca/collegetransfer

Foundations Pathway

This program is intended for students who have faced challenges in an academic environment and do not meet the 70% admissions average. Students begin their education journey with a reduced course load and additional support from our services team. Our staff and full-time faculty offer workshops to enhance academic skills and curriculum to support personal development. This strong foundation provides tools and strategies for continued success at Nipissing and offers a smooth transition into the second year of a qualifying degree program. Upon successful completion of first year, students will have earned up to 24 credits. For information visit: nipissingu.ca/foundationspathway

Indigenous Foundations Program

indigenousprograms@nipissingu.ca • nipissingu.ca/indigenous

This full-time, first year transition-to-university program is designed for Indigenous students who are planning to pursue an undergraduate degree and want access to cultural, personal, and/or academic resources.

Students who are transitioning from high school, upgrading, entering from a college program, or who have simply taken a break from their studies are eligible to apply to the program.

Students are part of a community of peers, staff, faculty and Elders while obtaining 24 credits toward a university degree in pre-selected courses for IFP students, and will:

- learn alongside other Indigenous students;
- attend orientation week to meet the professors and other students in the program;
- become more familiar with the university system; and
- gain confidence to be successful at university.

To apply to the Indigenous Foundations Program, prospective students can find the printable application form at nipissingu.ca/indigenous

For more information, please contact the Student Success and Development Coordinator at indigenousprograms@nipissingu.ca



Learn by Doing



Experiential learning provides students with hands-on learning experiences and results in uniquely employable graduates who are not only ready for the workforce, but ready to lead.

Experiential Learning for Arts and Science (ELAS)

ELAS is an exclusive project between Student Development and Services, the North Bay & District Chamber of Commerce and the Faculty of Arts and Science that focuses on providing students with hands-on learning experiences. With a strong emphasis on learning competencies, ELAS offers students enriched learning opportunities that focus on the development of professional skills resulting in confident, successful and highly employable graduates ready for the workforce.

Over 350 Community Partnerships

Experiential learning opportunities in many cases are built right into the curriculum as placements and directly engage students in a wide variety of practical, hands-on experiences outside the classroom. Multiple programs offer volunteer learn-by-doing opportunities that develop competencies in communication, critical thinking, collaboration, problem solving and leadership through integrated course-work placements, professional internships, co-ops and practicums.

Biidaaban Community Service-Learning (BCSL)

Biidaaban Community Service-Learning (BCSL) is a unique experiential learning program that allows students to volunteer within community organizations. Students may support not-for-profit organizations for course credit through project-based learning or through placements. They can also support Indigenous children and youth through the Biidaaban Youth Group and Biidaaban Academic Support programs. Participants receive training from Elders, Indigenous knowledge holders, faculty, educators and community members prior to their placements. Biidaaban is an Anishnaabe word meaning "the point at which the light touches the earth at the break of dawn."

iLEAD Business Experience Certificate & Expeditions

The successful completion of the iLEAD Business Experience Certificate is verification that students have taken advantage of the opportunity to learn through experience, action and discovery. The certificate is earned through successful completion of 15 specific Business credits. As students earn credits toward their degree, courses offer practical, hands-on experience through directed study, workplace internships, overseas study and volunteer service to others.

Nipissing's annual Undergraduate Research Conference celebrates the contributions of undergraduate research across Ontario. This conference allows students to showcase their work in a professional setting before their peers, faculty, and the public. Learn more at nipissingu.ca/ugrc

The Schulich School of Education

For more details, visit
nipissingu.ca/schulich

The Schulich School of Education at Nipissing University is a recognized leader in the field of teacher education. Earn your Bachelor of Education (BEd) degree in one of the pre-eminent education programs in Ontario. Renowned for graduating exceedingly well-prepared and professionally-minded teachers, the Schulich School will prepare you for teaching in traditional and non-traditional environments, and will provide you with transferable communication and collaborative skills that are essential to any career.

With a history of well over 100 years of teacher education, combined with a rigorous offering of professional learning opportunities, the Schulich School of Education immerses teacher candidates in a series of experiential learning opportunities that range from the integration of digital technology in the classroom, to national and international experiences, to polishing résumés and interview techniques prior to the annual education career fair. Schulich School of Education graduates maintain a distinct reputation as leading-edge and professional educators.

Consider one of two ways to earn your teaching certification: the Concurrent or the Consecutive program.



Pursuing a Degree in Education

	Concurrent Bachelor of Education	Consecutive Bachelor of Education
Description	Students graduate with a Dual Degree – an honours undergraduate degree in their discipline of choice (except Nursing and Social Work) and a Bachelor of Education degree.	A program for those students who already have a completed 3 or 4 year undergraduate degree from Nipissing or another university.
Duration	6 years	2 years (following an undergraduate degree)
Practicum	19 weeks of practicum + 60 hours of Community Leadership Experience (CLE) English Public school boards, English Separate school boards, and First Nations or federally administered schools	19 weeks of practicum + 60 hours of Community Leadership Experience (CLE) English Public school boards, English Separate school boards, and First Nations or federally administered schools
Division	Choose one of the following: P/J – (J/K to Grade 6) P/J – French as a Second Language J/I – (Grades 4 to 10) I/S – (Grades 7 to 12)	Choose one of the following: P/J – (J/K to Grade 6) P/J – French as a Second Language J/I – (Grades 4 to 10) I/S – (Grades 7 to 12)
How to Apply	Apply through ouac.on.ca by Jan 15, 2021	Apply through ouac.on.ca by Dec 1, 2020

P/J = Primary/Junior J/I = Junior/Intermediate I/S = Intermediate/Senior

For a list of
teaching subjects,
visit:
[nipissingu.ca/
teachingsubjects](http://nipissingu.ca/teachingsubjects)

Degree/Diploma Programs in Indigenous Education

For more information about our summer diploma programs, including admission requirements, tuition, family support, deadlines, and the application process, please visit nipissingu.ca/indigenouseducation

Indigenous Teacher Education Program (ITEP) Degree/Diploma

The Indigenous Teacher Education Program (ITEP) Degree/Diploma program is available for individuals of Indigenous ancestry. You are eligible if you have successfully completed one of the following from an accredited university or college:

- An undergraduate degree
- Early Childhood Education (ECE)
- Indigenous Classroom Assistant Diploma Program (ICADP)
(formerly Aboriginal/Native Classroom Assistant Diploma Program (ACADP/NCADP))
- Native Language Teaching Certificate (NLTC)
- Native Special Education Assistant Diploma Program (NSEADP)

This summer intensive program prepares individuals to develop teaching strategies, technological skills, and curriculum knowledge within an Indigenous worldview. The program's structure allows working professionals to attend classes in the summer and to return to employment during the academic year. Upon completion, successful applicants will earn a Certificate of Qualification from the Ontario College of Teachers in the Primary/Junior Divisions.

Indigenous Classroom Assistant Diploma Program (ICADP)

The Indigenous Classroom Assistant Diploma Program (ICADP) offers its candidates the opportunity to explore the role of the classroom assistant who works with Indigenous children in elementary public and First Nation schools.

Students explore culturally relevant pedagogical understandings in working with elementary students of all academic levels in numerous subject areas.

Practicum experiences allow students to connect educational theory with practical applications in the classroom and the entire school. Our graduates return to their classrooms with newly acquired skills and knowledge gained from the Indigenous Classroom Assistant Diploma Program to assist Indigenous children in elementary classrooms across the province.

Students in our Indigenous education programs are invited to bring their families with them into residence

The Youth Experience Program and NUScience Explorations camps are available to children of students in our Indigenous education programs



Teacher of Indigenous Language as a Second Language (TILSL) Degree/Diploma

The TILSL Program provides students who are fluent in the languages of Anishnaabemwin, Cree, Lunaape, Mohawk and Cayuga the opportunity to earn a Diploma in Education or Bachelor of Education Degree from Nipissing University. You will acquire a thorough understanding of new technologies as well as necessary strategies to deliver Indigenous traditional teachings and Indigenous languages as a subject within First Nation and Ontario public schools from Kindergarten to grade 12. The program's structure allows working professionals to attend classes in the summer and to return to employment during the academic year.



Apply for Admission

Apply
online at:
ouac.on.ca

To be considered for full-time admission to an Ontario university, prospective students can apply to the Ontario Universities' Application Centre (OUAC). If currently enrolled in an Ontario secondary school, your guidance counsellor will give you a Personal Identification Number (PIN) so that you can access the OUAC site and follow the application process. You will receive a confirmation email from Nipissing to confirm receipt of your application.

Your Application Timeline

Jan 15,
2021

Ontario deadline to apply to university

Ontario secondary school students are expected to submit application forms to the Ontario Universities' Application Centre (OUAC) by this date. Ontario secondary school students use the OUAC 101 application form.

Jan –
May

Offers of Admission are sent out

Offers of Admission are made during this period.

Please Note: Offers to Nursing and Physical and Health Education programs are made in late April or early May.

April 1,
2021

Application deadline

Canadian secondary school students from outside Ontario are expected to submit application forms to the Ontario Universities Application Centre (OUAC) by this date. Use the 105 application form.

New applications will continue to be accepted from Ontario secondary school students between January 15 and April 1. Ontario secondary school students should submit any changes to their program choices by this date.

Late applications may be considered after April 1 with the exception of limited enrollment programs (Nursing, Physical Education, and History with an Orientation to a Master of Arts in History.)



June 1,
2021

May 27,
2021

May 1,
2021

Entrance Awards/ Scholarships Application Deadline

Apply for scholarships and bursaries before receiving your Offer of Admission. To find application forms for the Chancellors Scholarships, Schulich Scholarships or other awards and bursaries, visit nipissingu.ca/studentfinancialservices

Response Date

Secondary school applicants should receive one of three responses from Nipissing:

- 1) Offer of Admission to your program of choice or an Alternate Offer; or
- 2) Delay of decision notification pending your response to our letter of request for specific additional information; or
- 3) Refusal.

Secondary school students receiving a full-time Offer of Admission by this date are eligible for a guaranteed spot in residence.

Accept our Offer of Admission by this date

Accept our Offer of Admission on the Ontario Universities' Application Centre (OUAC) website.

Residence Application Form and Deposit deadline

Guarantee your spot in residence by submitting your residence application form and deposit.

The Offer of Admission package you received from us provides instructions on how to apply and make online payments. Requests for special accommodations in residence should be completed by this date through the Accessibility Services Office (email: sas@nipissingu.ca).

If you have admissions questions, contact admissions@nipissingu.ca or call (705) 474-3450 ext. 4600

Applying to study full-time

How to apply

	Apply through the Ontario Universities' Application Centre (OUAC)	
Ontario secondary school students	101 application process	Apply by visiting ouac.on.ca
Students attending Canadian secondary schools outside Ontario	105 application process	
Applicants not currently attending a Canadian Secondary School		

Canadian Secondary School Applicants

Applying to your program of interest at Nipissing is simple – there are no hidden formulas. A minimum average of 75% is required for admission consideration to Concurrent Education. A minimum average of 80% is required for History with an Orientation to a Master of Arts in History. A minimum average of 70% is required for consideration for admission to all other programs. Averages for all programs are based on your best six final 4U/4M or equivalent courses including all required courses. Please refer to the Admissions Chart on page 34 for specific course requirements.

For general admission requirements for all Canadian provinces and territories, see the next page. The chart also outlines each provincial/territorial high school course that Nipissing University will accept as equivalent to the specific Ontario program prerequisites.

International Baccalaureate

Applicants who have successfully completed the International Baccalaureate (IB) diploma with at least six subjects, including three at a higher level, with a minimum final grade of 24, will be considered for admission. Students who successfully complete the International Baccalaureate (IB) diploma with a score of 24 or higher are eligible to receive up to 30 transfer credits, equivalent to one year of full-time study. Eligibility will be considered for all IB courses (higher & standard level) completed with a score of 5 or higher. Students are also eligible to receive transfer credit for individual higher & standard level IB courses completed with a score of 5 or higher.

Advanced Placement

Applicants who have completed Advanced Placement (AP) courses are encouraged to submit their examination results. Official AP score reports must be sent directly to Nipissing University. Advanced standing will be granted for most AP courses completed with a grade of 4 or higher, to a maximum of 18 credits. Nipissing's College Board number is 4149.

Proof of Proficiency in English

All applicants to Nipissing University undergraduate degree programs (excluding BEd) from countries where the dominant language of instruction is other than English are required to demonstrate proficiency in English for admission consideration. Permanent Resident applicants whose first language is not English may be required to provide proof of proficiency in English. Permanent Resident applicants whose first language is not English but who have lived at least three years in Canada, or a country where English is the dominant language may be exempt. Nipissing's full policy including minimum test scores can be found at nipissingu.ca/englishproficiency

Out of Province Admission Requirements

This table shows the high school courses for all provinces and territories that are equivalent to the admission requirements for Ontario students. Admission requirements for Ontario students can be found on the next page.

Ontario	General Requirements	English 4U	Biology 4U	Chemistry 4U	Physics 4U	Calculus and Vectors 4U	If Advanced Functions 4U or 4U Mathematics is required	Introduction to Kinesiology 4U
Alberta/NWT/Nunavut	Secondary School Diploma with five academic Grade 12 courses numbered 30 or 31 including program specific prerequisites.	English 30 or ELA 30-1	Biology 30	Chemistry 30	Physics 30	Math 31	Math 30-1 or Math 30-2 (Math 30-1 must be presented if Advanced Functions is specifically stated)	N/A
British Columbia/Yukon	Secondary School Diploma with four academic level Grade 12 courses (courses with % grades not letter grades) including program specific prerequisites. Provincial exams are not required.	English 12 or English 12: First Peoples	Biology 12	Chemistry 12	Physics 12	Calculus 12	Principles of Math 12	N/A
Manitoba	Secondary School Diploma with five academic 40 level courses including program specific prerequisites.	English 40S	Biology 40S	Chemistry 40S	Physics 40S	Pre-Calculus 40S	Applied Math 40S	N/A
New Brunswick	Secondary School Diploma with five academic Grade 12 courses number 121 or 122 (courses numbered 120 may be considered) including program specific prerequisites.	English 121 or 122	Biology 121 or 122	Chemistry 121 or 122	Physics 121 or 122	Advanced Math with an Introduction to Calculus 120	Trigonometry & 3-Space 121/122	N/A
Newfoundland	Secondary School Diploma with six two-credit academic courses at level 3000 including program specific prerequisites.	English 3201	Biology 3201	Chemistry 3202	Physics 3204	Math 3207	Math 3204 or Math 3205	N/A
Nova Scotia	Secondary School Diploma with five academic or advanced Grade 12 courses including program specific prerequisites.	English 12 or English 12: African Heritage	Biology 12	Chemistry 12	Physics 12	Pre-Calculus 12	Math 12	N/A
Prince Edward Island	Secondary School Diploma with five academic Grade 12 courses numbered 611 or 621 including program specific prerequisites.	English 621A	Biology 621A	Chemistry 611A or 621A	Physics 621A	Math 611B	Math 621B (Math 621A may be used to satisfy a non-specific 4U Math prerequisite)	N/A
Quebec (CEGEP)*	One year of CEGEP completed with a minimum of 12 academic subjects including program specific prerequisites.	2 semester courses in English (603 series)	2 semester courses in Biology (101 series)	2 semester courses in Chemistry (202 series)	2 semester courses in Physics (203 series)	Calculus I & II	Linear Algebra I & II	N/A
Quebec (Private)	Secondary School Diploma with six academic Grade 12 courses including program specific prerequisites.	Grade 12 English	Grade 12 Biology	Grade 12 Chemistry	Grade 12 Physics	Grade 12 Calculus	Grade 12 Math	N/A
Saskatchewan	Secondary School Diploma with five academic Grade 12 courses at the 30 level including program specific prerequisites.	English A30 and B30	Biology 30	Chemistry 30	Physics 30	Calculus 30	Math B30 and C30	N/A

* Applicants from Quebec who have completed more than one year of CEGEP (more than 12 courses) will be considered for admission with transfer credit.

Applicants who have completed the DEC program at a CEGEP with a cumulative average of "B" or better will be considered for admission with transfer credit to a maximum of 30 credits. Prerequisite subjects will apply.

Admissions Chart

The following chart lists prerequisite courses required for Nipissing University degree programs in 2021. Please note that English refers to one of ENG4U, EAE4U or NBE4U.

Degree Program	OUAC Application Program Codes	Minimum Average	Majors	Required 4U or Equivalent
Bachelor of Arts (BA)	PA	70%	Anthropology, Child and Family Studies ^{7,8,9} , Classical Studies, English Studies, Environmental Geography ^{2,4} , Gender Equality and Social Justice, Geography ^{2,4} , History, Indigenous Studies, Liberal Arts, Philosophy, Political Science, Psychology ^{7,8,9} , Religions and Cultures, Social Welfare and Social Development, Sociology	English
			Economics	English; one Mathematics
			Computer Science ⁵ , Mathematics ⁵	English; Calculus and Vectors; one other Mathematics
	PAJ	70%	Criminal Justice – Corrections; Criminal Justice Studies; Criminology; or Policing streams	English
	PAC	70%	Social Welfare and Social Development with a Social Service Worker diploma	English
PAH	80%	History with an Orientation to a Master of Arts in History	English	
Bachelor of Business Administration⁶ (BBA)	PBA	70%	Students select an area of concentration at the end of first year: Accounting; Entrepreneurship and Innovation Leadership; Finance; Human Resources; International Business; Marketing	English (two Mathematics is recommended) ¹
Bachelor of Fine Arts (BFA)	PFA	70%		English
Bachelor of Physical and Health Education (BPHE)	PPE	70%		English; one of Biology or Introduction to Kinesiology; (Chemistry and one Mathematics are recommended)

- 1 Students admitted without two 4U Mathematics or equivalent will be required to complete MATH 1911 and/or MATH 1912 in their first year.
- 2 A Certificate in Geomatics is also available to students pursuing an Honours degree in these majors.
- 3 A Certificate in Neuroscience is also available to students pursuing an Honours degree in these majors.
- 4 A Certificate in Environmental Management is also available to students pursuing an Honours degree in these majors.
- 5 A Certificate in Game Design and Development is available to students pursuing a degree in these majors.
- 6 An iLEAD Business Experience Certificate is available to students pursuing one of these degrees.
- 7 A Certificate in Applied Behaviour Analysis (ABA) – Lifespan is available to students pursuing an Honours Specialization, Specialization or a Major in these areas.
- 8 A Certificate in Early Intensive Behaviour Intervention (EIBI) – Autism Spectrum Disorder (ASD) is available to students pursuing an Honours Specialization, Specialization or a Major in these areas.
- 9 A Certificate in Program Evaluation and Applied Research (PEAR) is available to students pursuing an Honours Specialization, Specialization or a Major in these areas.
- 10 During Year 2 of the Bachelor of Social Work program, students must apply for admission consideration to the professional years (Years 3 & 4) of the program. Admission to the first or second year of the Bachelor of Social Work program does not guarantee acceptance into the professional years.

Degree Program	OUAC Application Program Codes	Minimum Average	Majors	Required 4U or Equivalent
Bachelor of Science (BSc)	PS	70%	Biology ³	English; Biology; Chemistry; one of Calculus and Vectors or Advanced Functions
			Computer Science ⁵	English; Calculus and Vectors; one other Mathematics; one of Biology, Chemistry or Physics
			Environmental Biology and Technology	English; Biology; Chemistry; one of Calculus and Vectors, Advanced Functions or Physics
			Environment and Physical Geography ^{2,4}	English; Mathematics; one of Chemistry or Physics
			Liberal Science – Sequence in two of Biology, Computer Science, Environmental Science, Geology, or Mathematics	English; two of Chemistry, Mathematics (either Calculus and Vectors or Advanced Functions) or Physics
			Mathematics ⁵	English, Calculus and Vectors; Advanced Functions; one of Biology, Chemistry or Physics
			Psychology ^{3,7,8,9}	English; one Mathematics; one of Biology, Chemistry or Physics
Bachelor of Science in Nursing (BScN)	PSN	70% 2020 cut-off: 78%-82%		English; Biology; Chemistry (one Mathematics is recommended)
Bachelor of Social Work (BSW)¹⁰	PSW	70%		English (minimum grade 70%)
Bachelor of Arts (BA) or Bachelor of Science (BSc) combined with Bachelor of Commerce (BComm)⁶	PAB or PSS	70%		The regular requirements for the Bachelor of Arts (BA) or Bachelor of Science (BSc) major to which the person has applied.

The following Certificates are available to all students pursuing any degree:

- Archaeological Monitoring
- Bilingualism
- Digital Classics
- Digital Humanities
- Forest Resource Management and Conservation
- Health Studies and Gerontology
- Indigenous Leadership
- Peace and Violence Prevention Studies
- Study of State Violence (War, Atrocity, and Genocide)

For out-of-province admission requirements, see page 33.

For international admission requirements, visit nipissingu.ca/internationaladmissions

Admissions Chart – Concurrent Education Programs

Degree Program		OUAC Application Program Codes	Minimum Average	Majors	Required 4U or Equivalent
Concurrent Bachelor of Arts (BA)/ Bachelor of Education (BEd)	Primary/Junior Junior/Intermediate Intermediate/Senior	PE PEA PEB	75%	Child and Family Studies ^{7,8,9} , Classical Studies, English Studies, Environmental Geography ^{2,4} , Gender Equality and Social Justice, Geography ^{2,4} , History, Philosophy, Political Science, Psychology ^{7,8,9} , Religions and Cultures, Social Welfare and Social Development, Sociology	English (minimum grade of 70%); one 3U, 3M, or 4U Mathematics (minimum grade of 60%)
				Computer Science ⁵ , Mathematics ⁵	English (minimum grade of 70%); Calculus and Vectors; one other Mathematics (4U Mathematics courses are required for admission and a minimum grade of 60% must be achieved in one of 3U, 3M or 4U Mathematics)
	Primary/Junior Junior/Intermediate Intermediate/Senior	PED PEF PEG	75%	Criminal Justice – Corrections; Criminology; or Policing streams	English (minimum grade of 70%); one 3U, 3M, or 4U Mathematics (minimum grade of 60%)
Concurrent Bachelor of Business Administration (BBA)⁶ / Bachelor of Education (BEd)	Primary/Junior Junior/Intermediate Intermediate/Senior	PEL PEM PEN	75%	Students select an area of concentration at the end of first year: Accounting; Entrepreneurship and Innovation Leadership; Finance; Human Resources; International Business; Marketing	English (minimum grade of 70%); one 3U, 3M, or 4U Mathematics (minimum grade of 60%); (two 4U Mathematics is recommended) ¹
Concurrent Bachelor of Fine Arts (BFA)/ Bachelor of Education (BEd)	Primary/Junior Junior/Intermediate Intermediate/Senior	PEH PEI PEK	75%		English (minimum grade of 70%); one 3U, 3M, or 4U Mathematics (minimum grade of 60%)

1 Students admitted without two 4U Mathematics or equivalent will be required to complete MATH 1911 and/or MATH 1912 in their first year.

2 A Certificate in Geomatics is also available to students pursuing an Honours degree in these majors.

3 A Certificate in Neuroscience is also available to students pursuing an Honours degree in these majors.

4 A Certificate in Environmental Management is also available to students pursuing an Honours degree in these majors.

5 A Certificate in Game Design and Development is available to students pursuing a degree in these majors.

6 An iLEAD Business Experience Certificate is available to students pursuing one of these degrees.

7 A Certificate in Applied Behaviour Analysis (ABA) – Lifespan is available to students pursuing an Honours Specialization, Specialization or a Major in these areas.

8 A Certificate in Early Intensive Behaviour Intervention (EIBI) – Autism Spectrum Disorder (ASD) is available to students pursuing an Honours Specialization, Specialization or a Major in these areas.

9 A Certificate in Program Evaluation and Applied Research (PEAR) is available to students pursuing an Honours Specialization, Specialization or a Major in these areas.

10 During Year 2 of the Bachelor of Social Work program, students must apply for admission consideration to the professional years (Years 3 & 4) of the program. Admission to the first or second year of the Bachelor of Social Work program does not guarantee acceptance into the professional years.

Degree Program		OUAC Application Program Codes	Minimum Average	Majors	Required 4U or Equivalent
Concurrent Bachelor of Physical and Health Education (BPHE)/ Bachelor of Education (BEd)	Primary/Junior Junior/Intermediate Intermediate/Senior	PEO PEQ PER	75%		English (minimum grade of 70%); one of Biology or Introduction to Kinesiology; one 3U, 3M, or 4U Mathematics (minimum grade of 60%); (Chemistry and one 4U Mathematics are recommended)
Concurrent Bachelor of Science (BSc)/ Bachelor of Education (BEd)	Primary/Junior Junior/Intermediate Intermediate/Senior	PES PET PEU	75%	Biology ³	English (minimum grade of 70%); Biology; Chemistry; one of Calculus and Vectors or Advanced Functions (4U Mathematics courses are required for admission and a minimum grade of 60% must be achieved in one of 3U, 3M or 4U Mathematics)
				Computer Science ⁵	English (minimum grade of 70%); Calculus and Vectors; one other Mathematics; one of Biology, Chemistry or Physics (4U Mathematics courses are required for admission and a minimum grade of 60% must be achieved in one of 3U, 3M or 4U Mathematics)
				Environment and Physical Geography ^{2,4}	English (minimum grade of 70%); Mathematics; one of Chemistry or Physics (a 4U Mathematics course is required for admission and a minimum grade of 60% must be achieved in one of 3U, 3M or 4U Mathematics)
				Environmental Biology and Technology	English (minimum grade of 70%); Biology; Chemistry; one of Calculus and Vectors, Advanced Functions or Physics (4U Mathematics courses are required for admission and a minimum grade of 60% must be achieved in one of 3U, 3M or 4U Mathematics)
				Mathematics ⁵	English (minimum grade of 70%); Calculus and Vectors; Advanced Functions; one of Biology, Chemistry or Physics (4U Mathematics courses are required for admission and a minimum grade of 60% must be achieved in one of 3U, 3M or 4U Mathematics)
				Psychology ^{3,7,8,9}	English (minimum grade of 70%); one Mathematics; one of Biology, Chemistry or Physics (a 4U Mathematics course is required for admission and a minimum grade of 60% must be achieved in one of 3U, 3M or 4U Mathematics)

The following Certificates are available to all students pursuing any degree:

- Archaeological Monitoring
- Bilingualism
- Digital Classics
- Digital Humanities
- Forest Resource Management and Conservation
- Health Studies and Gerontology
- Indigenous Leadership
- Peace and Violence Prevention Studies
- Study of State Violence (War, Atrocity, and Genocide)

For out-of-province admission requirements, see page 33.

For international admission requirements, visit nipissingu.ca/internationaladmissions

Come for a visit and see



Why you belong at Nipissing!

Approximate Travel Times to North Bay:

- Toronto 3.5 hours
- Ottawa 4 hours
- Montreal 5.5 hours
- Sudbury 1.5 hours

Visit our campus map: map.nipissingu.ca

Connect with us

Open Houses

Fall: Saturday, November 7, 2020*

March Break: Saturday, March 20, 2021*

*Please check the website regularly for updates to events.

For more information and to register for Open House, visit nipissingu.ca/futurestudents

Book Your Own Campus Tour

Can't make it to an Open House? Join us for a tour Monday to Friday at 1 p.m. (except holidays). Please register in advance: visit nipissingu.ca/tour, or call (705) 474-3450 ext. 4200 or email nuinfo@nipissingu.ca

Campus Tour Bursary

Nipissing University offers a bursary for prospective students who travel to visit our campus in North Bay. For an application form and full eligibility details visit nipissingu.ca/tourbursary

Questions? Email nuinfo@nipissingu.ca or call (705) 474-3450 ext. 4200.

nipissingu.ca/futurestudents

  @NURecruitment
 @NipissingU



ONE STUDENT AT A TIME

Student Recruitment Office • 100 College Drive, Box 5002, North Bay, ON P1B 8L7
tel: (705) 474-3450 ext. 4200 • toll free (within Ontario): (800) 655-5154
nuinfo@nipissingu.ca • fax: (705) 495-1772 • tty: (877) 688-5507

If you would like to request this publication in an alternative format please contact the External Relations Office at (705) 474-3450 ext. 4078