

NIPISSING

U N I V E R S I T Y

North Bay, Ontario, Canada 🇨🇦

Right where
you belong

INTERNATIONAL
HANDBOOK
2022 - 2023



Find out why you belong at Nipissing!

Average
class size
29



- Small class sizes
- Supportive professors
- Safe, small, friendly community
- Best residences in Canada with private, single bedrooms
- #1 in Student Services – supporting your success
- The school is surrounded by nature, with beautiful hiking trails and a waterfall right on campus

“As a student from India studying human resources at Nipissing, I have found the staff and faculty to be very warm, welcoming and accommodating to my needs. Nipissing is a multicultural community and I’m proud to be a part of it.”
– Suni C., Business Student

Land acknowledgement: Nipissing University is situated in the territory of the Robinson-Huron Treaty of 1850, and the land on which we gather is the Nipissing First Nation Traditional Territory and the traditional territory of the Anishnabek.

52,662
population of
North Bay
(2021)



Greetings from Nipissing

A Small School with Big Opportunities

We are so excited that you have chosen to study at Nipissing University! This is an exciting time in your life and we are happy to welcome you as the newest member of our Lakers family. No matter what country you are from or how long you stay, one thing will be certain: you will have the time of your life at Nipissing University. The school itself is small in population, but Nipissing's history is rich, proud and is one of the main attractions in the city that is considered "The Gateway to the North". We are very proud to offer world-class facilities, a state-of-the-art athletic centre and a student experience that will rival no other.

Nipissing's focus on student success and experience is recognized with top rankings in Canada in the areas of student support, student experience, faculty and residences. Enjoy learning in a high quality academic environment that is student-focused and based on personal teaching practices, innovative approaches to learning and a growing research culture. Interested students have the unique opportunity to assist with faculty research as an undergraduate student.

The information in this booklet will help guide your experiences at Nipissing from the time you arrive on campus, to the time you leave, while covering everything in-between. We are here to support you in making the smoothest transition possible. We look forward to meeting you when you arrive!

Table of Contents

Nipissing Campus Map	2	Student Support	14
Entering Canada	4	Academic Advising	14
Airport Travel	4	Accessibility Services	14
Transportation to North Bay	5	Campus Health Centre	14
Living in Canada	6	Career & Support	14
Climate and clothing	6	Enji giigdoyang, the Office of Indigenous Initiatives	14
Alcohol and other drugs	6	Equity Centre	14
Voltage and electrical outlets	7	Library	14
Banking	7	Multi-Faith Space	15
City of North Bay	8	Sexual Violence Prevention and Education	15
Transportation	9	Student Counselling	15
Places of Worship	9	Student Intervention Support	15
Being a Nipissing Student	10	Student Learning and Transitions	15
Preamble of Student Rights	10	Athletics	16
Standards of Student Responsibilities	10	Residence	18
Student Life	11	Financial Information	22
International Student Mentorship Program (ISMP)	11	Health Insurance	23
		Student Union (NUSU)	24


Nipissing Campus Map

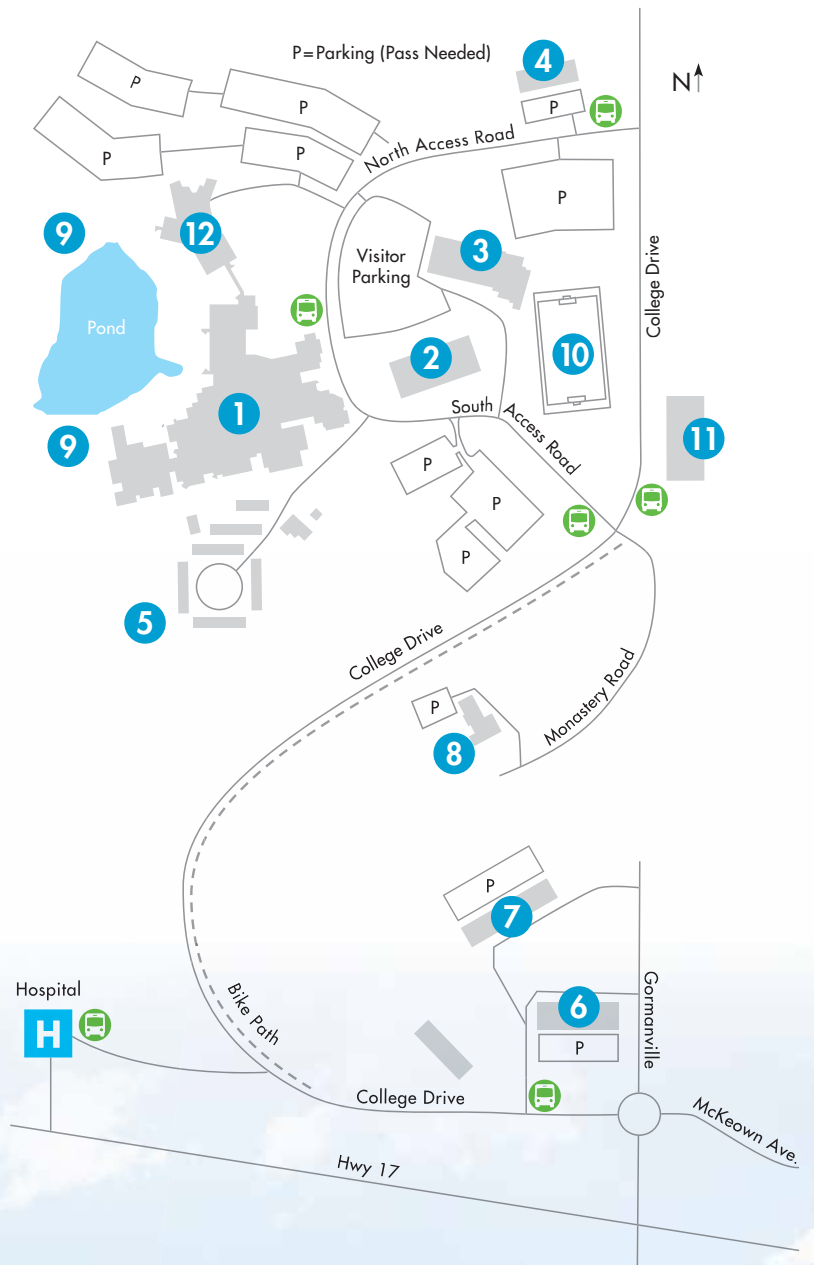
Check out our
interactive map
with virtual tours
and photos:
map.nipissingu.ca

We are proud to
share our campus with
Canadore College,
which adds to the
vibrancy of our
campus community.

20 km
of hiking/Nordic ski
trails on campus



- 1** Nipissing Main Building
International Admissions Room F205
International Support Room B
International Academic Advising Room
- 2** Harris Learning Library
- 3** R.J. Surtees Student Athletics Centre
- 4** Governors Residence
- 5** Townhouse Residence Complex (TRC)
- 6** Founders Residence
- 7** Chancellors Residence
- 8** Monastery Hall (Fine Arts)
- 9** Paths to 20 km of trails
- 10** Turf Field
- 11** NUSU Student Centre
- 12** Canadore College
-  City Bus Stop



Entering Canada

Airport Travel

You can enter Canada through Toronto's Pearson International Airport or Jack Garland Airport in North Bay. Toronto's Pearson International Airport is the nearest international airport to the city of North Bay. You can contact Pearson International Airport at 1-866-603-4495. If you choose to enter through Pearson International Airport, you will need to seek travel to North Bay.

Upon entry into Canada, a Canada Customs Officer will question your purpose of entry and check your immigration documents. Respond to any questions you are asked both simply and truthfully. Service will be available in English and French. If you do not understand, ask if an interpreter is available in other languages.

Be sure to carry the following documents in your hand luggage, as you will require them at the Canadian Immigration post:

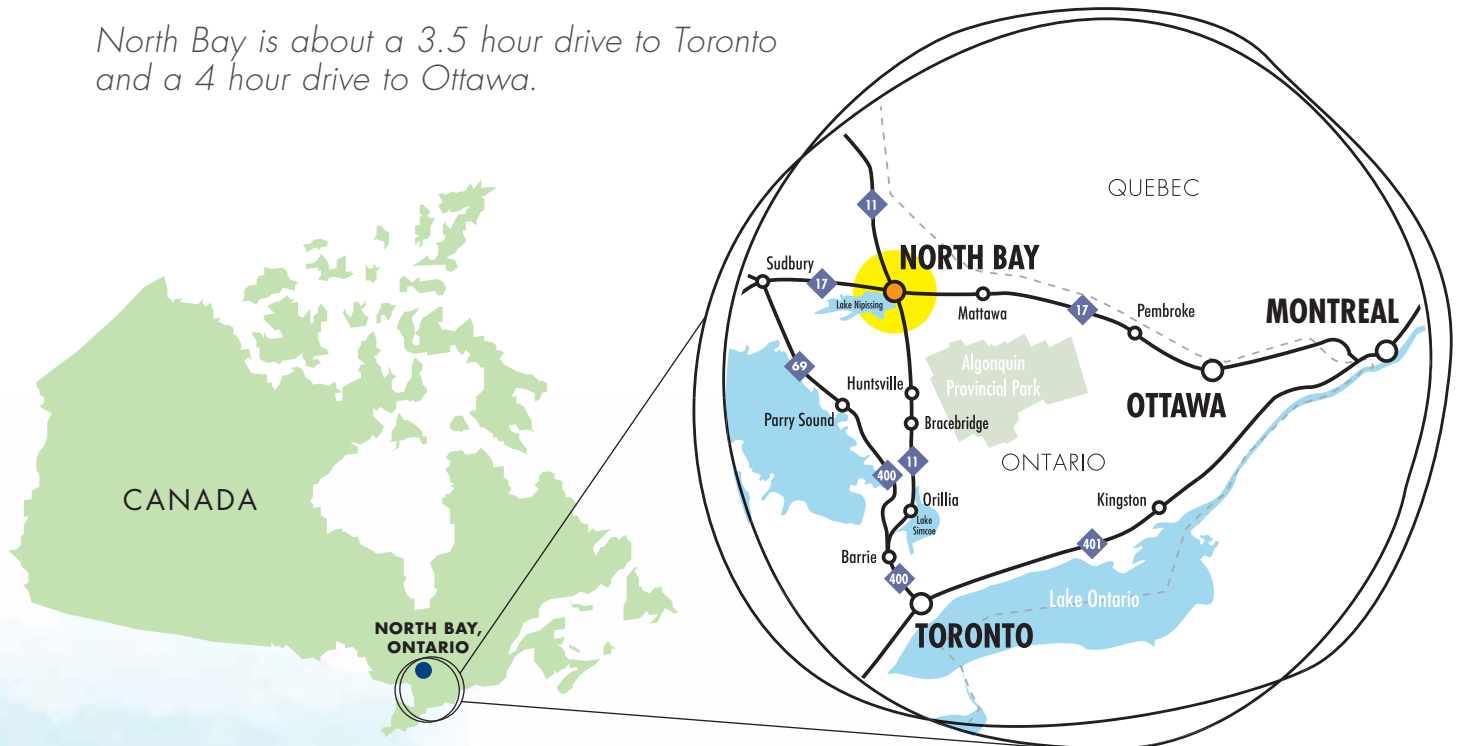
1. Passport
2. Study Permit (if required)
3. Proof of acceptance from Nipissing University
4. Proof of funds available for support (e.g. bank statement, traveler's cheques)

www.canada.ca/en/immigration-refugees-citizenship/services/study-canada/study-permit/prepare-arrival.html

It is strongly advised that you carry photocopies of all your official documents in a place separate from the originals. Also, it is suggested to leave copies of your documents with family members at home and email some photocopies to yourself.

For more information about visitors entering Canada (rules and regulations), visit: www.cbsa-asfc.gc.ca (see "non-Canadian" link)

North Bay is about a 3.5 hour drive to Toronto and a 4 hour drive to Ottawa.



Transportation to North Bay

You have three options for transportation from Pearson International Airport to North Bay.

Connecting Flight

If you book your flight to Toronto through Air Canada, it is possible to pre-book a non-refundable Air Canada connector flight from Toronto to North Bay (Jack Garland Airport). Pre-booked flights range from \$100 – \$150 CAD one-way. You can reach Jack Garland Airport at 1-705-474-3026 or yyb.ca.

Northern Airport Shuttle Service

northernairport.com

The Northern Airport Shuttle Service departs from the Pearson International Airport Ground Transportation Services desk twice a day (14:00h and 18:30h). The one-way fee for a single student from Pearson to North Bay (Country Style Donuts main drop-off) is \$130 CAD. For an additional charge of \$14, you can request to be dropped off at any location, including the Nipissing University campus.

The Northern Airport Shuttle Service may take several stops to pick up other passengers and will also stop for a coffee and washroom break between Toronto and North Bay. Reservations must be made in advance and pre-paid using a VISA or MasterCard. To make a reservation, email reserve@northernairport.com.

Northern Ontario Bus Lines

Ontario Northland is the only bus line to travel from Toronto to North Bay. The coach bus travels several times during the day, and departs from the Metro Toronto Coach Terminal located at Bay and Dundas Street in downtown Toronto. With the use of your host institution's student card or your ISIC card, the rate for a one-way trip from Toronto to North Bay is approximately \$72.45 CAD.

For more details, please refer to their website or phone number: www.ontarionorthland.ca or 1-800-363-7512. If you are travelling from Pearson International Airport, there is a Go Bus shuttle from Terminal 1, lower level, to the Yorkdale Mall Ontario Northland bus stop. The rate for this shuttle is \$6 CAD. For more information including scheduling, please refer to their website or phone number: www.gotransit.com or 1-888-438-6646.



Living in Canada

Climate and clothing

Canada is often associated with cold weather, snow and ice, but in reality, its climate is as diverse as its landscape. Generally, Canadians enjoy four very distinct seasons. Daytime summer temperatures can rise to 35°C and higher, while lows of -25°C are not uncommon in winter. More moderate temperatures are the norm in spring and fall, around 10°C.

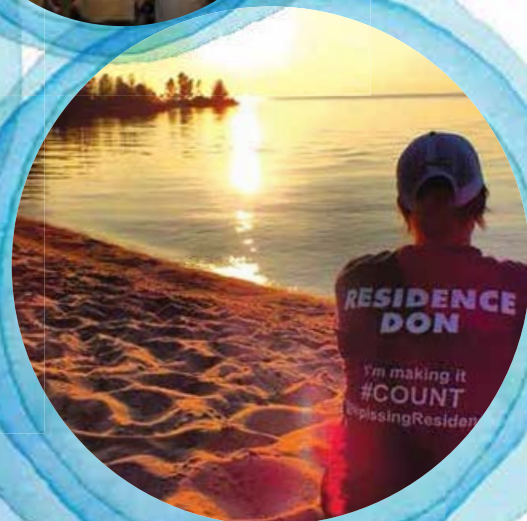
In spring and fall, when the temperatures are primarily anywhere from 5°C to 15°C, sweaters or light jackets are most comfortable.

In the winter, it is essential that students have a warm coat, gloves or mittens, winter boots, a scarf and warm hat. Remember that several layers of clothing may be warmer than one heavy sweater. Layers are the key to staying warm in the Canadian winters.

Canadian students dress casually for classes and for most occasions. Jeans and t-shirts are acceptable for both men and women. The emphasis is on comfort and practicality.

Voltage and electrical outlets

In Canada, appliances use 120 volts with plug type B. Plugging an appliance into an incorrect voltage outlet can cause an electrical fire. Some multi-voltage appliance models can be adjusted to match the proper current. If not, a “transformer” can be purchased at any major electronics retailer to do the conversion.



Banking

What kind of currency is used in Canada?

The Canadian dollar is the only currency commonly accepted across Canada. You can exchange most currencies for Canadian dollars at any commercial bank.

How much money should I have on me when I arrive?

It is advisable to arrive in Canada with at least \$200 CAD. This will pay for essentials such as transportation and food. It is also suggested to have at least \$500 – \$1,000 CAD in your bank account to cover any initial expenses.

Pricing in Canada?

www.numbeo.com/cost-of-living/in/North-Bay

Each province has their own tax regulations. Ontario has a harmonized sales tax of 13% which is charged to the base price for most items. Keep this in mind when shopping. Food is not taxed at grocery stores.

Can I open a Canadian bank account?

If you would like to open a bank account, there are several commercial bank branches near the campus. <https://arrivein.com>



City of North Bay

Located in North Bay, Ontario – three and a half hours north of Toronto, or four hours west of Ottawa – our campus is nestled between Lake Nipissing and Trout Lake and is located within a stunning 720 acres of Canadian Shield forest. Surrounded by natural beauty, Nipissing is the ideal environment for learning. With more than 60 percent of our students coming from out of town, everyone is eager to get to know each other and make new, life-long friendships. You will feel a sense of community the moment you step onto campus. Whether you are into the arts, exploring the outdoors or socializing with friends at any of our local restaurants within minutes of campus, check out the city’s website to get an idea of what there is to see and do in North Bay: www.cityofnorthbay.ca

The best part about North Bay is that the city offers you so much more than just the typical student life. From ice fishing on Lake Nipissing, to the skiing or snowboarding at Laurentian Ski Hill, there are plenty of options for a fun-filled weekend in the Bay! Make sure you join the International Student Mentor Program (ISMP) which offers a variety of events for students around town. Events take place throughout Nipissing, North Bay and Ontario, so make sure to join the Nipissing ISMP group on Facebook and check your email to keep up to date on all activities planned by your mentors!



Hike to the falls on the trails from campus



Transportation

City Buses

You can get around North Bay using the city bussing system. Your bus pass is included in your student fees and is your Nipissing University student card. Buses run every 15 minutes throughout the week and every half hour on weekends. Bus route information and schedules will be provided during orientation. Additionally, you are able to find city bus routes and times on Google Maps. Buses stop running around 12:00 am on weekdays and 10:00 pm on weekends.

MyRIDE App: www.northbay.ca/services-payments/north-bay-transit/myridenbt-app/

Taxi Cabs

Cabs generally take 5-15 minutes to pick you up from your required destination. To enter a cab, the base fee is \$4.50 CAD and the price increases the farther you travel. It costs approximately \$15 to take a cab from Chancellors Residence to downtown North Bay. Companies usually send cars, which seat four people. You can request van cabs that seat six people when calling for a cab.

Taxi: www.uneedacab.ca
Urیده App: uride.tech.com

Places of Worship

As a diverse country, we understand the importance of supporting our citizens and their beliefs. The North Bay community offers places of worship for several different faiths and religions.

To see a full list, please visit www.northbayimmigration.ca/living-in-north-bay/faith-and-worship/



Being a Nipissing Student

Preamble of Student Rights

At Nipissing University, students are free to think, speak, write, create, study, learn, pursue social, cultural and other interests, and freely associate together for all these purposes, subject to the requirement that they respect the rights of members of the University and general community to pursue these same freedoms and privileges. In order to secure these rights, the University will use its best efforts to ensure the following:

1. That those who wish to teach and those who wish to learn can do so under proper conditions;
2. That academic and general facilities are available to those who wish to use them for their normal purposes;
3. That freedom of movement and freedom from harassment are protected;
4. That all property, including records, documents and the like is protected;
5. That those who wish to file a complaint have the right to do so without fear of reprisal.

Standards of Student Responsibilities

All Students are expected

1. To abide by all federal, provincial and municipal laws;
2. To refrain from conduct which harms or threatens harm to:
 - The proper functioning of University programs or activities, both on and off campus, which include but may not be limited to teaching, studying, research, administration, student events, meetings and other services;
 - The rights of members or guests of the University;
 - The safety and well-being of members or guests of the University and surrounding community;
 - The property of the University or of its members or guests.
3. To refrain from
 - Assaults or threats of assault;
 - Harassment or discrimination in contravention of the principles articulated in the policies of the University, the Ontario Human Rights Code or the Canadian Charter of Rights and Freedoms;
 - Theft, defacement or destruction of property;
 - Unauthorized entry or trespass.
4. To abide by the regulations, rules, practices and procedures of the University and academic and administrative units;
5. To abide by reasonable instructions given orally or in writing by any official of the University authorized to secure compliance with regulations, rules, practices and procedures provided that the official is identified and is acting in an official capacity.



NU Student Life

Supportive Professors + Small Classes = Personalized Learning Environment

Students just like you choose Nipissing because of its friendly atmosphere and commitment to providing a personalized undergraduate experience. You will benefit from small class sizes, access to supportive professors, and if you are interested, the opportunity to assist with faculty research as an undergraduate student. University is so much more than classes, books and studies, though. You will decide what shape your life will take, and will have easy access to all the support systems you need. You may be most surprised by the amount of learning that happens outside the classroom.

International Student Mentorship Program (ISMP)

internationalsupport@nipissingu.ca

ISMP is designed to help international students develop friendships and adjust to their new learning and living environment. The mentors are Nipissing University students who volunteer their time to help support you! Some mentors may have studied abroad and others might be interested in going overseas in the future, but all of them have an interest in meeting new people and learning about different cultures. The mentors are responsible for organizing trips, social events and activities for international students. We recommend all new international students participate in ISMP, but it is not mandatory.

Members of the ISMP team are also available throughout the school year to help answer any questions you may have about your courses, campus procedures, on-campus living, the North Bay community and much more!

The Nipissing International Support office will send you an email prior to your arrival at Nipissing University. You will have the opportunity to meet with the mentors and participate in individual meetings as well as group events. It is important to keep in mind that our mentors are students as well, and although they have schoolwork and jobs of their own, they will do their best to help meet your needs.

Student to Faculty Ratio
23:1



We cannot wait for you to experience Nipissing's warm, tight-knit community. Our goal is to deliver you a truly Canadian experience.

TOP 5

in **STUDENT SATISFACTION**

in primarily undergraduate universities in Canada

– *Maclean's 2022*



87%

of Nipissing students
come from outside of
North Bay



Student Support

You can count on our support – academically, culturally, financially and personally. Services are available to both on campus and distance students. Student Development and Services and our other student supports are excellent resources that will help you maximize your success.

Academic Advising

internationaladvising@nipissingu.ca

Our primary focus is to enhance your learning experience and development. We will help you to:

- explore academic opportunities;
- address difficulties; and
- make the best informed and responsible decisions regarding your academic programs, priorities and goals.

Accessibility Services

sas@nipissingu.ca • nipissingu.ca/sas

Student Accessibility Services assists students with permanent or temporary disabilities. If you have (or suspect that you have) a disability, we encourage you to contact us to ask about test and exam accommodation, distraction-reduced working and testing areas, note-taking support, adaptive technology and assistive software, alternate format reading materials, and counselling or tutorial support.

Campus Health Centre

nipissingu.ca/healthcentre • (705) 474-7600 ext. 5261

A medical team is situated at the Campus Health Centre and is available to all students Monday to Friday. The Campus Health Centre provides quality services and health care delivery by a licensed physician and nurses.

Career & Support

nipissingu.ca/intlcareersupport

International and Exchange students can visit the website to find important information about studying and working in Canada, résumé and cover letter tips, and tools and local resources for volunteer and employment opportunities.

Enji giigdoyang, the Office of Indigenous Initiatives

indigenousprograms@nipissingu.ca • nipissingu.ca/indigenous

In the Nbisiing dialect of Anishnaabemwin, Enji giigdoyang means “where we come to meet, discuss and talk about things.” We enhance the educational experience through a holistic approach to academic, personal, and cultural support and offer a range of programs both on-campus, online, and hybrid. We honour one another’s life experiences and invite you to connect on-campus or virtually with our community and guests at events throughout the year.

- Enji giigdoyang Student Lounge / Virtual Student Lounge
- Indigenous Week and Enji giigdoyang Speaker Series
- Visiting Elders
- Experiential learning opportunities
- Activities to support academic, personal and cultural wellbeing
- Indigenous peer mentorship programs
- Indigenous Art and Speaker Series

Equity Centre

equitycentrenu@nipissingu.ca • (705) 474-3450 ext. 4213

The Equity Centre is a student-run inclusive space on campus where students can hang out, learn, or help organize events and campaigns that raise awareness of equity issues that impact the diverse communities at Nipissing University. The Centre provides education and resources, advocates on behalf of students and promotes allyship on campus. The Equity Centre and its events are open to everyone.

Library

eclibrary.ca/library • info@eclibrary.ca

The Harris Learning Library is your gateway to library services, online instructional tutorials and information resources including electronic and print books, articles and streaming videos. Information resources can be accessed through OMNI (nipissingu.ca/omni), an easy to use academic search tool that provides access to over 23 million items from 18 of Ontario’s university libraries. Friendly and knowledgeable staff members provide help in person, by email or phone whether you are on campus, studying online, or at a distance. For those not on campus, further information is available here: nipissingu.ca/remotelibraryservices

Multi-Faith Space

Room H340

With a diverse community studying and working at Nipissing, the University has developed the Multi-Faith Space, offering an inclusive space on campus for people to practice all religions. The neutral environment allows for a comfortable place for prayer, meditation and reflection.

Sexual Violence Prevention and Education

svsupport@nipissingu.ca • nipissingu.ca/sexualviolence

Nipissing University is committed to creating and maintaining a safe environment for all students. Survivors are offered navigation of services on and off campus, assistance with arranging academic accommodations and help understanding reporting options. Additionally, there are free workshops on consent, healthy relationships and bystander intervention for all students.

Student Counselling

counselling@nipissingu.ca • nipissingu.ca/counselling

Student Counselling Services offers free personal counselling services, specialized therapeutic groups, referral services and wellness events to all students. We endeavor to do all we can to help support students in achieving positive mental and emotional wellness.

Student Intervention Support

sis@nipissingu.ca • nipissingu.ca/sis

Student Intervention Support (SIS) is offered to students who may be experiencing difficulty accessing the appropriate services, require a referral to services, require further collaboration within their current support services, or need assistance transitioning to or from the University (e.g. returning after being admitted to the hospital, registering again after withdrawing for mental health reasons, etc.) The relationship between the SIS staff and the student is collaborative, goal-oriented, supportive and voluntary.

Student Learning and Transitions

slt@nipissingu.ca • nipissingu.ca/slt

The goal of Student Learning and Transitions (SLT) is to support students' academic and personal success from Orientation to graduation. We provide one-on-one academic consultations, group workshops and tutorials, peer-to-peer support and tutoring, subject-specific resources and a referral point for all students. Our transition programs focus on the multiple changes that occur throughout a student's post-secondary experience and include facilitated programs, campus activities, and events that promote academic and social integration to your Nipissing University Lakers community.



Athletics

Robert J. Surtees Student Athletics Centre

Whether you are a varsity athlete, gym enthusiast or weekend warrior, our state-of-the-art athletics centre offers everything you need to stay active. The building is located in the heart of campus next to our artificial turf field, making it easy to cheer on our Lakers athletes.

- 3 gymnasiums
- 2 international squash courts
- 3 fitness rooms with weekly fitness classes in a variety of disciplines
- Cardio studio
- Weight room
- Turf field
- 20 km of hiking and snowshoe trails
- Groomed Nordic ski trails

Membership
is included
in your
student fees



Fun Fact:
RINGETTE
was invented in
North Bay
by Sam Jacks
in 1963

Sports Teams

For a complete list of sports and details on how to register, visit nulakers.ca

Intramural Sports

Exercise and healthy competition always help to clear the mind. Nipissing's Athletics Department offers a wide range of intramural activities to keep you on your game. Teams include:

- Basketball
- Dodgeball
- Flag Football
- Hockey
- Slo-Pitch
- Soccer
- Volleyball
- Ultimate Frisbee

Club Sports

Club sports are available to all Nipissing students and are both recreational and competitive.

- Cheerleading
- Women's Ringette
- Dance Pak

Varsity-Club Sports

- Men's Lacrosse

Varsity Teams

Go Lakers! Our varsity athletes always bring their A-game. Get your friends together and come out to cheer on your favourite teams.

We have both men's and women's varsity teams competing at the OUA level in:

- Basketball
- Cross-country Running
- Hockey
- Nordic Skiing
- Rowing
- Soccer
- Volleyball

Home of the
LAKERS



Residence

A private bedroom of your own

Our top-rated residences will make you feel right at home. You can count on making fast friends within your residence community, and enjoy the luxury of a private room of your own in a four bedroom apartment.

Our student leaders, Residence Dons and residence staff give tutorials on everything from the basics of laundry and cooking, to making connections within the community. Our Community Assistants and Academic Dons offer additional support for residents in each complex to help with a smooth transition into university.

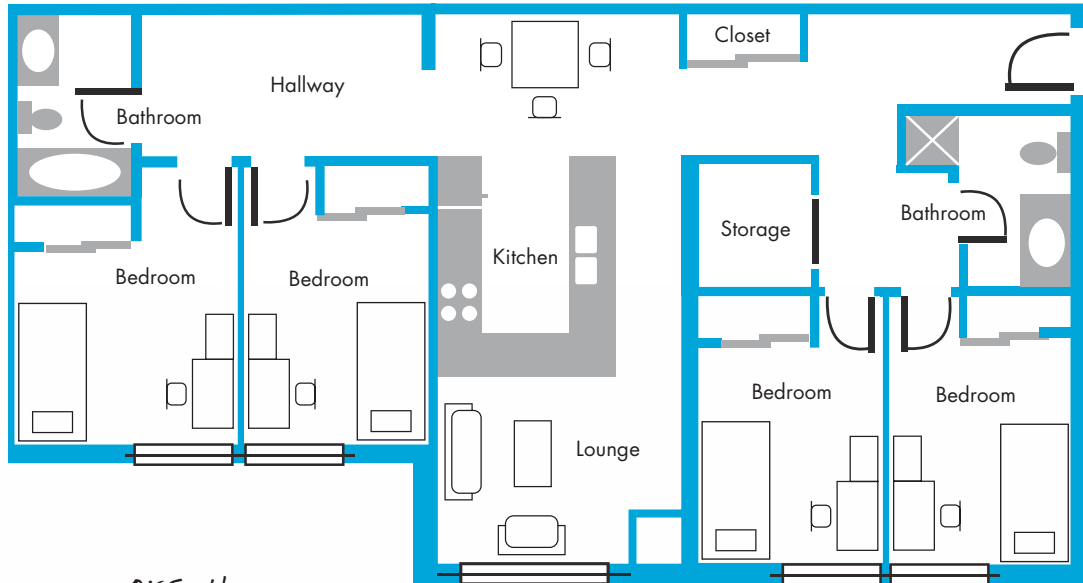
For full details, visit nipissingu.ca/residence



Residences are all a short walk to class, or you can hop on the bus for an even shorter bus ride. See page 2 for a campus map.

Suite-style Residences

sample layout



Governors House



Chancellors House



Founders House



Guaranteed Single Rooms in Residence

If you are a current secondary school student who receives full-time admission by **May 29, 2023**, and you meet the residence application and deposit deadline of **June 1, 2023**, you are guaranteed a single room in a suite-style residence. Each fully-furnished suite accommodates four students and features:

- 4 private bedrooms
- Furnished kitchen with fridge and stove; living room; dining area
- 2 full bathrooms
- Local telephone and cable TV hookup in bedrooms and living room
- Wireless and wired high-speed internet access
- Access to a laundry room, common areas and lounge

Living Learning Communities

Live with friends who like the same things you do in one of our four Living Learning Communities (LLC). The communities bring together students who share similar interests, and provide an immediate support network.

- Balance: physical, mental and spiritual well-being
- Connect: global citizenship and cultural education
- LEAD (Leaders Emerging through Active Development): leadership
- Mosaic: arts-based, including music, drama, crafts, fine arts, digital and more.



Therapy dog visits reduce stress

Townhouse Residence Complex (TRC)

These residences are usually reserved for upper year students. The TRC is located beside the main academic building at the top of College Drive and accommodates six students to a house. Built on two levels, each fully-furnished townhouse has:

- Three private bedrooms and half bathroom on the main floor
- Three private bedrooms and a full bathroom on the upper level
- Kitchen with fridge and stove
- Dining area
- Living room and loft

Off Campus Living

offcampusliving@nipissingu.ca
ocl.nipissingu.ca

Off Campus Living (OCL) supports Nipissing University students who are considering living or currently living off campus through educational content, digital resources, workshops, and support connecting with local rentals.

When the weather gets cold enough, the residence skating rink is flooded for students to skate for fun or play a friendly game of hockey!

Townhouse Residences



Residence events and activities help you form lifelong friendships and socialize all year long.



Create a Financial Plan

A plan helps you achieve your goals on time and on budget. This information is provided for guidance only. These are estimated based on 2022-2023 costs of living on campus for the 8-month academic term and are subject to change from year to year.

International Student Fees (\$ CAD)	
Tuition	\$21,000
Ancillary Fees (includes a City of North Bay transit pass)	\$1,289
Student Health Insurance	\$769 ^Δ
Residence	\$6,092 – \$6,800 [†]
Food	\$2,600*
Books and Supplies	\$500 – \$1,000
Personal (does not include travel home)	\$1,700
Total	\$33,950 – \$35,158

* Optional meal plan included in above cost for example purposes is \$1100/term, plus an estimated \$400 for weekend eating out or groceries. For full details visit dineoncampus.ca/nipissingcanadore

† Includes refundable \$100 damage deposit.

Δ Includes UHIP (University Health Insurance Plan) for International Students (\$63/month x 8 months = \$504.00); subject to change

- Optional on-campus parking (depending on lot): \$161 – \$255

Visit our online calculator for tuition and living expenses:
nipissingu.ca/tuition



Health Insurance

What is UHIP?

The University Health Insurance Plan (UHIP) is a health care plan that is compulsory for foreign residents studying at a university in Ontario. For degree students, UHIP coverage ends on August 31. Contact the International Support Office to receive further information before travelling to Canada at internationalsupport@nipissingu.ca

Do I have to purchase UHIP?

Yes, UHIP is mandatory for all students regardless of any other plans you may have. UHIP has extensive coverage and there are very few plans that are similar to UHIP.

What does UHIP cover?

- Emergency room services at hospitals
- Medications prescribed during hospitalization
- Annual health examination
- Surgery
- Emergency ambulance
- Services of practitioners, such as osteopaths and podiatrists to the same levels and under the same conditions as OHIP
- Hospitalization in a standard ward
- Physician's services
- Diagnosis and treatment of illness and injury
- Diagnostic laboratory and X-ray services
- Repatriation

Note: UHIP does not pay for prescription medication, routine dental care, eyeglasses, contact lenses or physiotherapy.

How much does it cost?

Premiums change annually. For the 2022-2023 school year, the cost is \$63/month x 8 months = \$504. Payment of UHIP fees for the duration of your studies is due upon arrival.

Find more information here: www.uhip.ca

How do I register?

During your International Student Orientation, you will receive instructions on registering online for your UHIP proof of coverage.



Student Union (NUSU)

info@nusu.com • (705) 474-3450 ext. 4801 • nusu.com

   @NUSUtalks

Being away from home or starting a new chapter in life can be both exciting and challenging. At the Nipissing University Student Union, we are dedicated to ensuring you are supported through academic excellence and social growth. NUSU is run by four elected student Executives who work with staff to represent all Nipissing students including on-campus and distance students. Being involved on and off campus is one of the best ways to make the most of your university experience.

As an elected board, NUSU Executives and Directors provide a full range of services (financial and academic), activities, events and political advocacy to improve the student experience including:

- NUSU Student Centre
- Health and dental plan
- Student food bank
- Student groups (clubs and societies)
- Community involvement
- Orientation Week and Shine Day
- Volunteer opportunities
- Academic and government advocacy



To find out how you can get involved, visit nusu.com



The NUSU Student Centre

Situated at the corner of College Drive and Monastery Road, the Student Union Building is a defining feature on the approach to campus, welcoming students and visitors while symbolizing the importance of the student body at Nipissing University.

This building features study nooks, a two-storey atrium, restaurant, nightclub, courtyard, outdoor patio, and study rooms. The Student Centre is used for social and academic purposes. This 32,000 square-foot structure is a great place to study, connect, make memories, and attend concerts and seminars. We look forward to seeing you there!

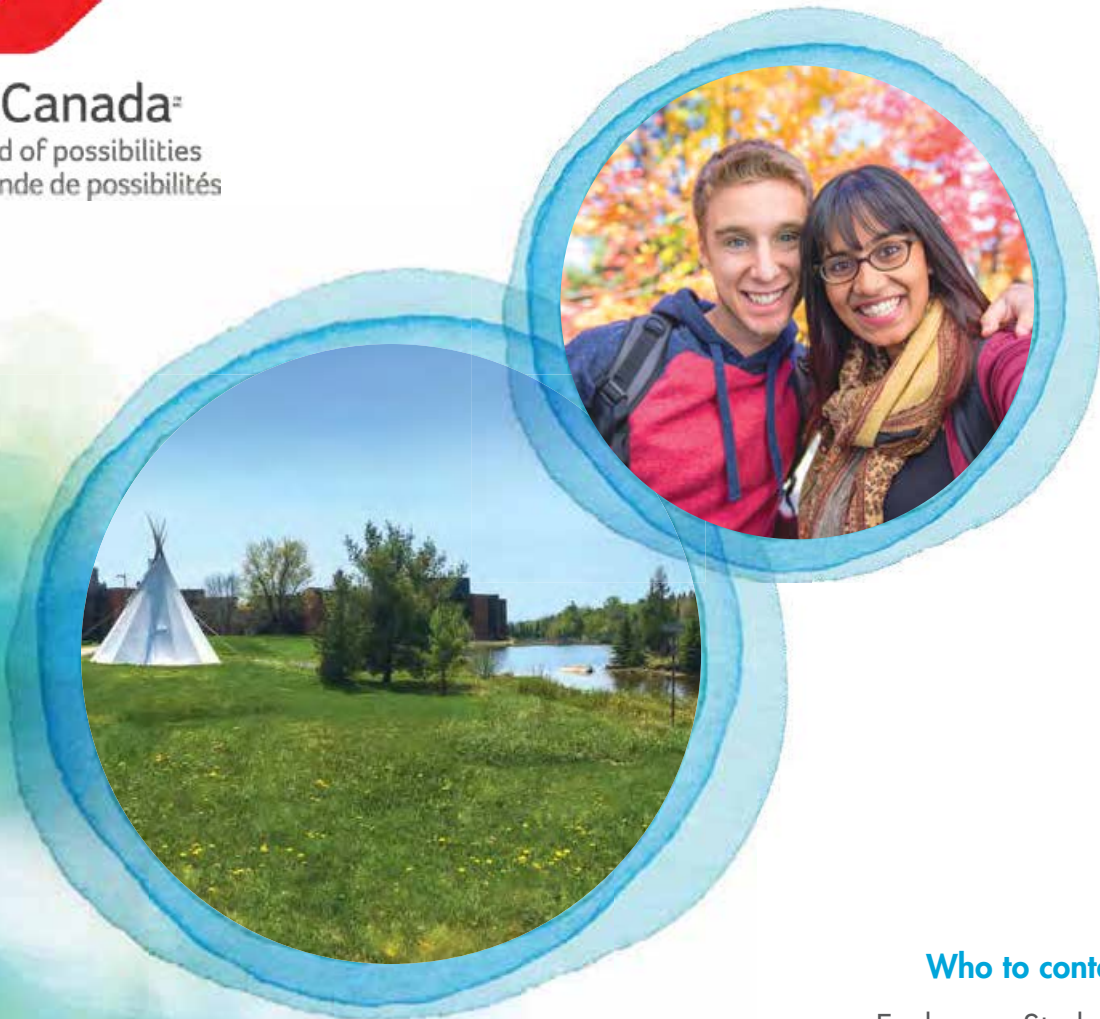
NIPISSING UNIVERSITY STUDENT UNION





EduCanada[®]

A world of possibilities
Un monde de possibilités



Who to contact:

Exchange Students:
internationalmobility@nipissingu.ca

International Student Support:
internationalsupport@nipissingu.ca



ONE STUDENT AT A TIME

100 College Drive, Box 5002, North Bay, ON P1B 8L7
tel: (705) 474-3450 ext. 4136 • tty: (877) 688-5507 • fax: (705) 495-2850
www.nipissingu.ca

If you would like to request this publication in an alternative format please contact International Department at (705) 474-3450 ext. 4433 or email internationalsupport@nipissingu.ca