

NIPISSING

U N I V E R S I T Y

Right where
you belong

North Bay, Ontario, Canada 🇨🇦

INTERNATIONAL
ADMISSIONS
2023

international.nipissinglakers.com



TOP 5

in **STUDENT
SATISFACTION**

in primarily undergraduate
universities in Canada
– Maclean's 2022



Find out why you belong at Nipissing!

Average
Class Size

29



- Small class sizes
- Supportive professors
- Safe, small, friendly community
- Best residences in Canada with private, single bedrooms
- #1 in Student Services – supporting your success
- The school is surrounded by nature, with beautiful hiking trails and a waterfall right on campus

"As a student from India studying human resources at Nipissing, I have found the staff and faculty to be very warm, welcoming and accommodating to my needs. Nipissing is a multicultural community and I'm proud to be a part of it."
— Suni C., Business Student

Land acknowledgement: Nipissing University is situated in the territory of the Robinson-Huron Treaty of 1850, and the land on which we gather is the Nipissing First Nation Traditional Territory and the traditional territory of the Anishnabek.

52,662

population of
North Bay
(2021)



Program Options

We have a variety of options to structure and customize your degree. For admissions requirements please see page 12. For a full list of program offerings, please visit nipissingu.ca/programs

Questions?
Email
internationaladmiss@nipissingu.ca

Undergraduate programs

- Anthropology
- Biology
- Business
 - Concentrations in: Accounting, Entrepreneurship and Innovation Leadership, Finance, Human Resources, International Business, and Marketing
- Child and Family Studies
- Classical Studies
- Commerce (only as a Dual Degree with BA or BSc)
- Computer Science
- Criminal Justice
 - Streams in: Corrections, Criminal Justice Studies, Criminology, and Policing
- Data Science
- Economics
- English Studies
- Environment and Physical Geography
- Environmental Biology and Technology
- Environmental Geography
- Fine Arts
- Gender Equality and Social Justice
- Geography
- History
- Indigenous Studies
- Liberal Arts
- Liberal Science
- Mathematics
- Nursing
- Philosophy
- Physical and Health Education
- Political Science
- Psychology
- Religions and Cultures
- Social Welfare and Social Development
- Social Work
- Sociology

Graduate and Professional Programs

- Bachelor of Education (Concurrent and Consecutive)
- Master of Arts (History)
- Master of Arts (Sociology)
- Master of Environmental Science
- Master of Environmental Studies
- Master of Science (Kinesiology)
- Master of Science (Mathematics)
- PhD in Education (Educational Sustainability)



Nursing students not only have access to simulated learning labs on campus, but may have an opportunity to complete their experiential learning placements at the North Bay Regional Health Centre – a top tier hospital that is only a few minutes walk from residence and campus.

Program Options (continued)

Dual Degrees

Bachelor of Commerce Dual Degree

If you would like to combine Business with an Arts or Science program, Nipissing offers you the opportunity to study both and complete a Bachelor of Arts or Bachelor of Science degree with a Bachelor of Commerce degree in as little as five years. This dual degree allows you to study a wider range of general interest and career specific subjects. For admissions requirements, please see page 12. For more information on getting a dual degree, please contact the International Recruitment Office at internationaladmiss@nipissingu.ca or call (705) 474-3450 ext. 4433.

Concurrent Education

Nipissing offers a 6-year concurrent program that leads to you earning both an honours undergraduate degree in your discipline of choice (except Nursing and Social Work), and a Bachelor of Education degree. For further details visit nipissingu.ca/education

Second Degree Applicants

Students possessing an undergraduate degree may proceed to a second undergraduate degree program in another area of study. Students may be admitted to a second degree program if they hold a recognized university degree from an accredited university.

A second degree in Nursing may require the repeating of core credits taken in the first degree, if they are more than 10 years old.

The Schulich School of Education at Nipissing University is a recognized leader in the field of teacher education. Renowned for graduating exceedingly well-prepared and professionally-minded teachers, the Schulich School will prepare you for teaching and provide you with transferable communication and collaborative skills that are essential to any career.

For more
details, visit
[nipissingu.ca/
schulich](http://nipissingu.ca/schulich)



Post-Baccalaureate Diplomas

(2 year program; 60 credits)

Post-Baccalaureate Diplomas are available to international students who have already graduated with a minimum of a 3-year undergraduate degree from a recognized university.

Applicants must have at least six credits of university English and/or Communications (at a recognized English language university in an English speaking country) prior to admission or have met Nipissing University's English language proficiency requirements through the acceptable English language tests. The English/Communication courses and/or English language tests must have been completed within the two years prior to attending Nipissing University. Otherwise, applicants must meet Nipissing's English Language Proficiency requirements.

Specific details about English language policy can be found on page 11 and at nipissingu.ca/englishproficiency

Business Studies

Students will build a foundation of general business knowledge and may specialize in one of the five areas.

Post-Baccalaureate Diploma in Business Administration

Build your general business knowledge and skills through a broad set of courses including topics on commercial law, change management and business strategy.

Post-Baccalaureate Diploma in Finance

Deepen your financial acumen through the study of topics including portfolio and wealth management, financial derivatives and risk management.

Post-Baccalaureate Diploma in Human Resource Management

Complement your study of business foundations with courses in recruitment, industrial relations and human resource planning.

Post-Baccalaureate Diploma in International Business

Focuses on general business in an international context with courses about international marketing, management and finances.

Post-Baccalaureate Diploma in Marketing

Build upon business foundation courses with a marketing focus with courses in consumer behaviour, communications, sports marketing and digital marketing.

Environmental Studies

Designed for international students who already have an undergraduate degree in a complementary science discipline and would like expand their knowledge of the environment and be introduced to the environmental sector in Canada.

Post-Baccalaureate Diploma in Environment and Sustainability

Available for international applications who have already graduated with an undergraduate degree in science and/or engineering or equivalent with an overall average of 70% or higher.

Health Studies

Designed for international students who are interested in individual and population health and social outcomes, and gaining foundational knowledge and skills required to tackle key challenges in health and wellbeing, at the individual, family, and population levels.

Post-Baccalaureate Diploma in Health and Social Impact

Available for international applications who have already graduated with an undergraduate degree with an overall average of 70% or higher.

Post-Baccalaureate Certificates

(1 year program)

Post-Baccalaureate Certificate in Human Resources Management (33 credits)

This certificate is designed for applicants who wish to pursue the HRPACHRP designation. Applicants will possess, at minimum, a three-year university degree for admission consideration.

Post-Baccalaureate Certificate in General Management (30 credits)

This certificate is designed for graduates of non-business degree programs who wish to pursue business studies. Applicants will possess a non-business undergraduate degree for admission consideration.



Enjoy interactive classes with caring, supportive professors.

Finance Your Education

Your final grades make a big difference. Scholarship averages are calculated using your best six final 4U/4M marks (or provincial or international equivalent) completed as of June 30, 2023. All Canadian and international applicants applying directly from secondary school for September entry will be considered automatically for guaranteed entrance scholarships for Fall 2023 entry – no application needed!

The chart below outlines the 2023-2024 guaranteed entrance scholarships. Please visit nipissingu.ca/highschoolawards for the most up-to-date entrance awards information or email finaid@nipissingu.ca

*No
application
needed!*

Guaranteed Entrance Scholarships

Scholarship Average [†]	Year 1	Year 2*	Year 3*	Year 4*	Total Scholarship Value
95% + (39+ for IB)	FREE TUITION	FREE TUITION	FREE TUITION	FREE TUITION	>\$24,000
90-94% (36-38 for IB)	\$2,500	\$2,500	\$2,500	\$2,500	\$10,000
85-89% (33-35 for IB)	\$1,500	\$1,500	\$1,500	\$1,500	\$6,000
80-84% (30-32 for IB)	\$1,000	\$1,000	\$1,000	\$1,000	\$4,000

Notes:

- Free tuition is based on domestic tuition rate: \$5,780 – \$7,275.
- Students are only eligible for the first four years of undergraduate study.
- Concurrent BEd students in years 5 and 6 of study, and Consecutive BEd students in the 2-year program are not eligible for the renewal of these scholarships.

[†] Average based on the best six final 4U/4M courses (provincial or international equivalent) or final IB score (including bonus points).

* Based on cumulative GPA (CGPA) as recorded on April 30th. Students must enroll in no less than 24 credits annually to retain scholarship eligibility.

Located in the heart of campus, the Harris Learning Library features naturally lit and large open spaces for studying, collaborating and connecting.



\$7,500 Schulich Scholarships

- Awarded to selected full-time students entering the first year of an undergraduate degree program with a focus on education
- Concurrent Education, Bachelor of Physical and Health Education, or the Consecutive Bachelor of Education*
- Must have a minimum 80% average and at least one of the following: volunteer work; community involvement; or financial need.

*Please note: Students applying to the 2 year Consecutive Bachelor of Education program should apply for Schulich Scholarships by Jan 15.

Other Bursaries and Awards

There are a number of other donor-established bursaries and awards for which upper year international students may qualify; to be considered, please complete the Web Bursary application that is posted on WebAdvisor (Nipissing's online student portal) the month of October.

International Work Study Program

The International Work-Study program provides part-time, on-campus employment to upper year international students who can prove financial need. International Work-Study is not intended to provide emergency funding; rather, it is to act as a supplement to a student's finances and to provide valuable on-campus employment which is allowed via Citizenship & Immigration Canada (CIC).

Contact the International Studies Office (internationalsupport@nipissingu.ca) for more information.

Create a financial plan

A plan helps you achieve your goals on time and on budget. This information is provided for guidance only.

These are estimated based on 2022-2023 costs of living on campus for the 8-month academic term and are subject to change from year to year.

International Student Fees	
Full-time Tuition	\$21,000
Ancillary Fees (includes a City of North Bay transit pass)	\$1,289
Student Health Insurance	\$769 ^Δ
Residence	\$6,092 – \$6,800 [†]
Food	\$2,600*
Books and Supplies	\$500 – \$1,000
Personal (does not include travel home)	\$1,700
Total	\$33,950 – \$35,158

* Optional meal plan included in above cost for example purposes is \$1100/term, plus an estimated \$400 for weekend eating out or groceries. For full details visit dineoncampus.ca/nipissingcanadore

[†] Includes refundable \$100 damage deposit.

^Δ Includes UHIP (University Health Insurance Plan) for International Students (\$63/month x 8 months = \$504.00); subject to change

- Optional on-campus parking (depending on lot): \$161 – \$255

Visit our online calculator for tuition and living expenses:

nipissingu.ca/tuition



Residence

A private bedroom of your own

Our top-rated residences will make you feel right at home. You can count on making fast friends within your residence community, and enjoy the luxury of a private room of your own!

Our student leaders, Residence Dons and award-winning residence staff give tutorials on everything from the basics of laundry and cooking to making connections within the community. Our Community Assistants and Academic Dons are additional support for residents in each complex to help with a smooth transition into university.

For full details, visit nipissingu.ca/residence

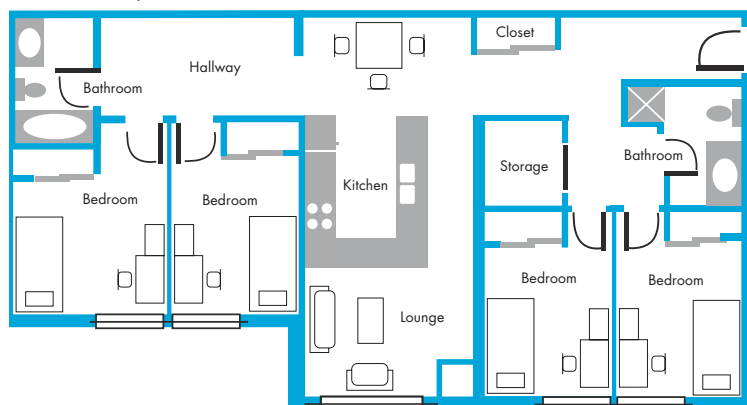
#1

in
RESIDENCE LIVING
in primarily undergraduate
universities in Canada
— Maclean's 2022

Find out more about our top rated residences at nipissingu.ca/residence



sample layout



When the weather gets cold enough, the residence skating rink is flooded for students to skate for fun or play a friendly game of hockey!

#2

in
STUDENT LIFE STAFF
in primarily undergraduate
universities in Canada
— Maclean's 2022



Student Support

You can count on our support — academically, culturally, financially and personally. Student Development and Services is an excellent resource that will help you maximize your success. For more information on our top rated support, please visit the following services:

Academic Advising

nipissingu.ca/academicadvising

Provides support to undergraduate students who wish to plan their programs or who need advice on any academic matter.

Accessibility Services nipissingu.ca/sas

Supports students with permanent and temporary disabilities while striving to provide an accessible, barrier-free learning environment.

Campus Health Centre

nipissingu.ca/healthcentre

Provides quality services and health care delivery by a licensed physician and nurses available to all students.

Enji giigdooyang, the Office of Indigenous Initiatives nipissingu.ca/indigenous

Supports Indigenous Student Success through academic, personal and cultural programs offered.

Equity Centre equitycentrenu@nipissingu.ca

A student-run space on campus where students can hang out, learn, or help organize events that raise awareness of equity issues.

International Support

nipissingu.ca/international
internationalsupport@nipissingu.ca

Provides support, programming and orientation to both international degree-seeking students and short-term exchange students who choose to study at Nipissing University.

International Career & Support

nipissingu.ca/intlcareersupport

International and Exchange students can visit the website to find important information about studying and working in Canada, résumé and cover letter tips, and tools and local resources for volunteer and employment opportunities.

Multi-Faith Space **Room H340**

A quiet, comfortable place for prayer, meditation and reflection.

Off Campus Living ocl.nipissingu.ca

Designed to assist students with sourcing housing off campus and a resource for students to help with everyday living in the community.

Sexual Violence Prevention and Education

nipissingu.ca/sexualviolence

Builds awareness about sexual and gender-based violence on campus and making the necessary supports accessible for those affected.

Student Counselling nipissingu.ca/counselling

Supports all students in achieving positive mental and emotional wellness.

Student Intervention Support

nipissingu.ca/nuperspective

Strives to create an environment that is free from violence and harassment, where students can be safe and feel secure.

Student Learning and Transitions

nipissingu.ca/slt

A group of services and programs aimed at helping students engage in their academic studies and student life at Nipissing University.

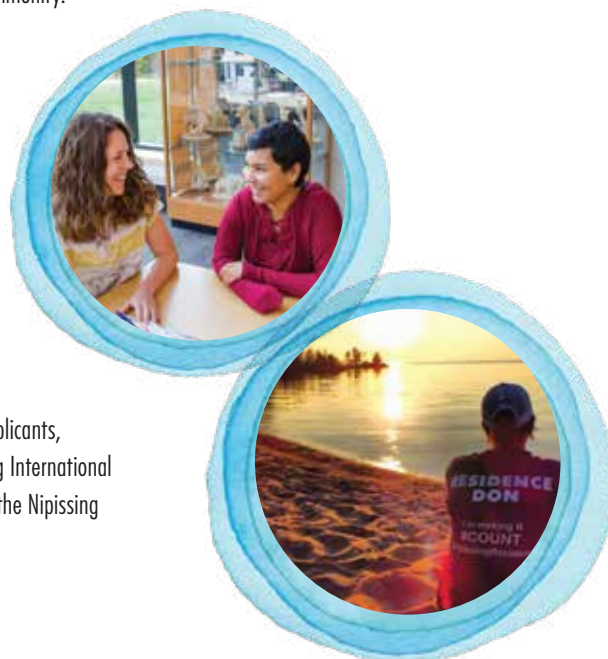


Student Exchange Opportunity

Applicants looking to participate in a student exchange at Nipissing University must first connect with their home institution about the application process. Partnering institutions for student exchange with Nipissing are responsible for the selection process of their eligible applicants, and a formal nomination is made by the applicant's home institution directly to the Nipissing International Mobility Office. Once the nomination is received, the applicant will be contacted directly by the Nipissing International Mobility Office to complete all necessary documentation.

For more information about the student exchange program at Nipissing visit:

nipissingu.ca/international or email us at internationalmobility@nipissingu.ca



How to Apply

Nipissing welcomes qualified applicants from outside of Canada to consider applying to degree programs at Nipissing University. Applications and all required official transcripts and applicable supplemental documentation are due by **April 1** for September admission consideration.

International applicants applying Full-time (studying in Canada on a study permit or studying in another country with no current status in Canada)		
Students attending an Ontario curriculum secondary school	101 application process	Apply by visiting ouac.on.ca
Students attending a Canadian curriculum secondary school (other than Ontario)	Nipissing International Application	Apply by visiting www.nipissingu.ca/applyintl
All other international applicants		

Please visit international.nipissinglakers.com or email internationaladmiss@nipissingu.ca for more information.

Required Documentation

All secondary school transcripts should be sent directly to Nipissing University from the applicant's school and/or examination board. Documents not written in English must be accompanied by original notarized English translations from recognized sources. Applicants are required to declare and submit any and all postsecondary institutions attended or are currently attending. All postsecondary transcripts must be assessed (Credential Evaluation Report, including a Course-By-Course Analysis) by World Education Services (www.wes.org/ca).

International College or University Transfer Applicants

Applicants who have attended or are currently attending a recognized institution will be considered for admission based on their postsecondary studies. Program prerequisites must be met through previous secondary or previous/current postsecondary studies. Further information on prerequisite courses can be found in this brochure under Admission Requirements or at www.nipissingu.ca/admissionschart. Courses completed from a recognized institution may be eligible for transfer credit consideration. Transfer credits are assessed after applicants accept their offer of admission. Students possessing an undergraduate degree may be eligible for admission consideration to a second undergraduate degree program in another area of study.

Below: Students in the Bachelor of Physical and Health Education program.

Left: Learning to build a "quinzee" (snow shelter) in outdoor education.

Right: Studying the movements of the human body using motion capture technology.



Get more information
on how to apply at:

international.nipissinglakers.com



English Language Proficiency Policy

Applicants to programs offered at Nipissing University whose first language is not English will be required to achieve the required proficiency level on one of the following tests of English language proficiency for admission consideration.

English Proficiency Test	Undergraduate Programs	Post Baccalaureate Programs	BScN	BEd & Graduate Programs
IELTS	6.5 – No bands less than 6		7 – No bands less than 6.5	6.5 – No bands less than 6.5
TOELF IBT	83 with a minimum score of 20 in reading, listening and writing, and a minimum score of 22 in speaking		93 with a minimum score of 20 in reading and listening and a minimum score of 22 in writing and speaking	
PTE – Pearson Test of Academic English	58 with a minimum score of 56 in each section		63 with a minimum score of 60 in each section	
CAE – Cambridge Assessment English	C1 minimum overall score of 176 with a minimum score of 169			
CAEL/ CAEL Online – Canadian Academic English Language	60 with no band less than 60		70 with no band less than 60	

Admission Requirements

The following are the minimum admission requirements for admission consideration to Nipissing University. Applicants are required to achieve a high overall standing in their studies and must include the appropriate program specific prerequisites depending on the degree program applied to. All applicants are considered on an individual basis. Meeting the minimum admission requirements does not guarantee admission.

	International Baccalaureate (IB)	American School System/ Advanced Placement (AP)	General Certificate of Education (GCE British Patterned Education)	International School Systems
General Requirements	Applicants who have completed the full International Baccalaureate (IB) diploma with at least six subjects, including three at the higher level, with a minimum grade total of 24 (not including bonus points) may be eligible for admission consideration. Transfer credit to a maximum of 30 credits may be granted for courses completed at the higher level with a grade of 5 or higher.	Applicants who have graduated with a “B” average from Grade 12 at an accredited high school may be eligible for admission consideration. Applicants must present SAT or ACT scores regardless of citizenship. Prerequisite subjects completed at the Freshman or Sophomore level are not acceptable. Transfer credit will be granted to a maximum of 18 credits for AP courses completed with a grade of 4 or better. Nipissing’s SAT code is 4149 and ACT code is 5167.	Applicants who present a minimum of the General Certificate of Education (GCE) with satisfactory standing in at least five subjects, two of which must be at the advanced level, or satisfactory standing in at least four subjects, three of which must be at the advanced level may be eligible for admission consideration. Two Advanced Supplementary/Advanced Subsidiary (AS) subjects are considered equal to one Advanced Level subject for admissions purposes. Transfer credit may be award for A Level results. It is highly recommended that prerequisites be completed at the A Level.	Applicants possessing the requirements necessary for admission to a recognized university in their home country may be eligible for admission consideration. Prerequisite subjects must be met. All prerequisites should be completed at the senior secondary school level. Further information can be found at nipissingu.ca/internationaladmissions or by contacting internationaladmiss@nipissingu.ca

Admission Requirements

Degree Requirements

Degree Program	Application Program Code	Subject of Major Interest	Required Courses			
			International Baccalaureate (IB)	American School System/ Advanced Placement (AP)	General Certificate of Education (GCE British Patterned Education)	International School Systems
Bachelor of Arts (BA)	PA	Anthropology, Child and Family Studies ⁷ , Classical Studies, English Studies, Environmental Geography ^{2,4} , Gender Equality and Social Justice, Geography ^{2,4} , History ⁸ , Indigenous Studies, Liberal Arts, Philosophy, Political Science, Psychology ⁷ , Religions and Cultures, Social Welfare and Social Development, Sociology	HL or SL English	Senior level English	English	English
		Economics	HL or SL English; one of HL or SL Analysis and Approaches, or HL Applications and Interpretation	Senior level English; Senior level Mathematics	English; Mathematics	English; Mathematics
		Computer Science ⁵ , Mathematics ⁵	HL or SL English; one of HL or SL Analysis and Approaches, or HL Applications and Interpretation	Senior level English; Senior Mathematics	English; Mathematics	English; Mathematics
	PAJ	Criminal Justice – Corrections; Criminal Justice Studies; Criminology; Policing streams	HL or SL English	Senior level English	English	English
	PAC	Social Welfare and Social Development with a Social Service Worker diploma	HL or SL English	Senior level English	English	English
	PAH	History with an Orientation to a Master of Arts in History	HL or SL English	Senior level English	English	English
Bachelor of Business Administration (BBA)⁶	PBA	Students select an area of concentration at the end of first year: Accounting, Entrepreneurship and Innovation Leadership, Finance, Human Resources, International Business, Marketing	HL or SL English (one of HL or SL Analysis and Approaches, or HL Applications and Interpretation is recommended) ¹	Senior level English; (Senior level Mathematics recommended) ¹	English (Mathematics recommended) ¹	English (Mathematics recommended) ¹
Bachelor of Fine Arts	PFA		HL or SL English	Senior level English	English	English
Bachelor of Physical and Health Education	PPE		HL or SL English; HL or SL Biology: one of HL or SL Analysis and Approaches, or HL or SL Applications and Interpretation	Senior level English; Senior or Junior level Biology (Senior or Junior level Chemistry and Senior level Mathematics is recommended)	English; Biology (Chemistry and Mathematics recommended)	English; Biology (Chemistry and Mathematics recommended)
Bachelor of Science (BSc)	PS	Biology ³	HL or SL English; HL or SL Biology; HL or SL Chemistry; one of HL or SL Analysis and Approaches or HL Applications and Interpretations	Senior level English; Senior level Mathematics; Senior or Junior level Biology and Chemistry	English; Biology; Chemistry; Mathematics	English; Biology; Chemistry; Mathematics
		Computer Science ⁵	HL or SL English; one of HL or SL Analysis and Approaches or HL Applications and Interpretations; one of HL or SL Biology, HL or SL Chemistry or HL or SL Physics	Senior level English; Senior level Mathematics; one of Senior or Junior level Biology, Chemistry or Physics	English; Mathematics, one of Biology, Chemistry or Physics	English; Mathematics; one of Biology, Chemistry or Physics

Degree Requirements

Degree Program	Application Program Code	Subject of Major Interest	Required Courses			
			International Baccalaureate (IB)	American School System/ Advanced Placement (AP)	General Certificate of Education (GCE British Patterned Education)	International School Systems
Bachelor of Science (BSc)	PS	Data Science	HL or SL English; one of HL or SL Analysis and Approaches or HL Applications and Interpretation; one of HL or SL Biology, HL or SL Chemistry or HL or SL Physics	Senior level English; Senior or Junior level Mathematics; one of Senior or Junior level Biology, Chemistry or Physics	English; Mathematics; one of Biology, Chemistry or Physics	English; Mathematics; one of Biology, Chemistry or Physics
		Liberal Science – Sequence in two of Biology, Computer Science, Environmental Science, Geology, or Mathematics	HL or SL English; two of HL or SL Chemistry, one of HL or SL Analysis and Approaches or HL or SL Applications and Interpretations, or HL or SL Physics	Senior level English; two of Senior or Junior level Chemistry, Physics or Senior level Mathematics	English; two of Chemistry, Mathematics or Physics	English; two of Chemistry, Mathematics or Physics
		Mathematics ⁵	HL or SL English; one of HL or SL Analysis and Approaches or HL Applications and Interpretations; one of HL or SL Biology, HL or SL Chemistry or HL or SL Physics	Senior level English; Senior level Mathematics; one of Senior or Junior level Biology, Chemistry or Physics	English; Mathematics; one of Biology, Chemistry or Physics	English; Mathematics; one of Biology, Chemistry or Physics
		Environmental Biology and Technology	HL or SL English; HL or SL Biology; HL or SL Chemistry; one of HL or SL Analysis and Approaches or HL Applications and Interpretations, or HL or SL Physics	Senior level English; Senior or Junior level Biology and Chemistry; one of Senior or Junior level Physics or Senior level Mathematics	English; Biology; Chemistry; one of Mathematics or Physics	English; Biology; Chemistry; one of Mathematics or Physics
		Environment and Physical Geography ^{2,4}	HL or SL English; one of HL or SL Analysis and Approaches or HL or SL Applications and Interpretations; one of HL or SL Chemistry or HL or SL Physics	Senior level English; Senior level Mathematics; one of Senior or Junior level Chemistry or Physics	English; Mathematics; one of Chemistry or Physics	English; Mathematics; one of Chemistry or Physics
		Psychology ^{3,7}	HL or SL English; one of HL or SL Analysis and Approaches or HL or SL Applications and Interpretations; one of HL or SL Biology; HL or SL Chemistry or HL or SL Physics	Senior level English; Senior level Mathematics; one of Senior or Junior level Biology, Chemistry or Physics	English; Mathematics; one of Biology, Chemistry or Physics	English; Mathematics; one of Biology, Chemistry or Physics
Bachelor of Science in Nursing (BSN)	PSN		HL or SL English; HL or SL Biology; HL or SL Chemistry (one of HL or SL Analysis and Approaches or HL or SL Applications and Interpretations recommended)	Senior level English; Senior or Junior level Biology and Chemistry (Senior level Mathematics recommended)	English; Biology; Chemistry (Mathematics is recommended)	English; Biology; Chemistry (Mathematics is recommended)
Bachelor of Social Work (BSW)⁹	PSW		HL or SL English (minimum grade of 4)	Senior level English (minimum grade of 70%)	English (minimum grade of C)	English (Minimum grade of 70% or equivalent)
Bachelor of Arts (BA) or Bachelor of Science (BSc) combined with Bachelor of Commerce⁶	PAB, PSS		The regular requirements for the Bachelor of Arts (BA) or Bachelor of Science (BSc) major applied to.	The regular requirements for the Bachelor of Arts (BA) or Bachelor of Science (BSc) major applied to.	The regular requirements for the Bachelor of Arts (BA) or Bachelor of Science (BSc) major applied to.	The regular requirements for the Bachelor of Arts (BA) or Bachelor of Science (BSc) major applied to.

Admission Requirements for Concurrent Education

Degree Program	Application Program Code	Subject of Major Interest	Required Courses			
			International Baccalaureate (IB)	American School System/ Advanced Placement (AP)	General Certificate of Education (GCE British Patterned Education)	International School Systems
Concurrent Bachelor of Arts (BA)/Bachelor of Education (BEd) <i>Primary/Junior Junior/Intermediate Intermediate/Senior</i>	PE, PEA, PEB	Child and Family Studies ⁷ , Classical Studies, English Studies, Environmental Geography ^{2,4} , Gender Equality and Social Justice, Geography ^{2,4} , History ⁸ , Indigenous Studies ¹ , Philosophy, Political Science, Psychology ⁷ , Religions and Cultures, Social Welfare and Social Development, Sociology	HL or SL English (minimum grade of 4); one of HL or SL Analysis and Approaches or HL or SL Applications and Interpretations (minimum grade of 3)	Senior level English (minimum grade of 70%); Senior or Junior level Mathematics (minimum grade 60%)	English (minimum grade of C); Mathematics (minimum grade of D)	English (minimum grade of 70% or equivalent); Mathematics (minimum grade of 60% or equivalent)
		Computer Science ⁵ , Mathematics ⁵	HL or SL English (minimum grade of 4); one of HL or SL Analysis and Approaches or HL Applications and Interpretations **one of HL or SL Analysis and Approaches or HL Applications and Interpretations with a minimum grade of 3 is required for admission consideration to Concurrent Education	Senior level English (minimum grade of 70%); Senior level Mathematics **Senior or Junior level Mathematics with a minimum grade 60% is required for admission consideration to Concurrent Education	English (minimum grade of C); Mathematics (minimum grade of D)	English (minimum grade of 70% or equivalent); Mathematics (minimum grade of 60% or equivalent)
	PED, PEF, PEG	Criminal Justice - Corrections; Criminology; Policing streams	SL or HL English (minimum grade of 4); one of HL or SL Analysis and Approaches or HL Applications and Interpretations (minimum grade of 3)	Senior level English (minimum grade of 70%); Senior or Junior level Mathematics (minimum grade 60%)	English (minimum grade of C); Mathematics (minimum grade of D)	English (minimum grade of 70% or equivalent); Mathematics (minimum grade of 60% or equivalent)
Concurrent Bachelor of Business Administration (BBA)⁶/ Bachelor of Education (BEd) <i>Primary/Junior Junior/Intermediate Intermediate/Senior</i>	PEL, PEM, PEN	Students select an area of concentration at the end of first year: Accounting, Entrepreneurship and Innovation Leadership, Finance, Human Resources, International Business, Marketing	HL or SL English (minimum grade of 4); one of HL or SL Analysis and Approaches or HL or SL Applications and Interpretations (minimum grade of 3)	Senior level English (minimum grade of 70%); Senior or Junior level Mathematics (minimum grade 60%) (Senior level Mathematics is recommended) ¹	English (minimum grade of C); Mathematics (minimum grade of D)	English (minimum grade of 70% or equivalent); Mathematics (minimum grade of 60% or equivalent)
Concurrent Bachelor of Fine Arts (BFA)/ Bachelor of Education (BEd) <i>Primary/Junior Junior/Intermediate Intermediate/Senior</i>	PEH, PEI, PEK		SL or HL English (minimum grade of 4); one of HL or SL Analysis and Approaches or HL or SL Applications and Interpretations (minimum grade of 3)	Senior level English (minimum grade of 70%); Senior or Junior level Mathematics (minimum grade 60%)	English (minimum grade of C); Mathematics (minimum grade of D)	English (minimum grade of 70% or equivalent); Mathematics (minimum grade of 60% or equivalent)

1 Students admitted without the recommended Mathematics will be required to complete MATH 1911 or MATH 1912 in their first year.

2 A Certificate in Geomatics is also available to pursuing an Honours degree in these areas.

3 A Certificate in Neuroscience is also available to pursuing an Honours degree in these areas.

4 A Certificate in Environmental Management is also available to pursuing an Honours degree in these areas.

5 A Certificate in Game Design and Development is available to students pursuing a degree in these areas.

6 An iLEAD Business Experience Certificate is available to students pursuing one of these degrees.

7 A Certificate in Program Evaluation and Applied Research (PEAR) is available to students pursuing an Honours Specialization, Specialization or a Major in these areas.

8 A Certificate in Study of State Violence (War, Atrocity, and Genocide) is available to students pursuing a degree in these majors.

9 During Year 2 of the Bachelor of Social Work program, students must apply for admission consideration to the professional years (Years 3 & 4) of the program. Admission to the first or second year of the Bachelor of Social Work program does not guarantee acceptance into the professional years.

10 Mathematical Studies is not acceptable.

11 Indigenous Studies is available to Concurrent Education students pursuing an Honours degree with a double major.

The following certificates are available to all students pursuing any degree:

Applied Behaviour Analysis (ABA) — Lifespan
Archaeological Monitoring
Bilingualism
Conflict Resolution and Negotiation
Digital Classics
Digital Humanities

Early Intensive Behaviour Intervention (EIBI) —
Autism Spectrum Disorders (ASD)
Forest Resource Management and Conservation
Health Studies and Gerontology
Societies in Transition: Relationship, Reciprocity, and
Reconciliation Histories

Admission Requirements for Concurrent Education (continued)

Degree Program	Application Program Code	Subject of Major Interest	Required Courses			
			International Baccalaureate (IB)	American School System/ Advanced Placement (AP)	General Certificate of Education (GCE British Patterned Education)	International School Systems
Concurrent Bachelor of Physical and Health Education (BPHE)/ Bachelor of Education (BEd) <i>Primary/Junior Junior/Intermediate Intermediate/Senior</i>	PEO, PEQ, PER		HL or SL English (minimum grade of 4); one of HL or SL Analysis and Approaches or HL Applications and Interpretations (minimum grade of 3); HL or SL Biology (HL or SL Chemistry is recommended)	Senior level English (minimum grade of 70%); Senior or Junior level Mathematics (minimum grade 60%); Senior or Junior level Biology (Senior or Junior level Chemistry is recommended)	English (minimum grade of C); Mathematics (minimum grade of D); Biology (Chemistry recommended)	English (minimum grade of 70% or equivalent); Mathematics (minimum grade of 60% or equivalent); Biology (Chemistry recommended)
Concurrent Bachelor of Science (BSc)/Bachelor of Education (BEd) <i>Primary/Junior Junior/Intermediate Intermediate/Senior</i>	PES, PET, PEU	Biology ³	HL or SL English (minimum grade of 4); HL or SL Biology; HL or SL Chemistry; one of HL or SL Analysis and Approaches or HL Applications and Interpretations ⁴	Senior level English (minimum grade of 70%); Senior or Junior level Biology and Chemistry; Senior level Mathematics ⁵	English (minimum grade of C); Biology; Chemistry; Mathematics (minimum grade of D)	English (minimum grade of 70% or equivalent); Biology; Chemistry; Mathematics (minimum grade of 60% or equivalent)
		Computer Science ⁵	HL or SL English (minimum grade of 4); one of HL or SL Analysis and Approaches or HL Applications and Interpretations ⁴ ; one of HL or SL Biology, HL or SL Chemistry or HL or SL Physics	Senior level English (minimum grade of 70%); Senior level Mathematics ⁵ ; one of Senior or Junior level Biology, Chemistry or Physics	English (minimum grade of C); Mathematics (minimum grade of D); one of Biology, Chemistry or Physics	English (minimum grade of 70% or equivalent); Mathematics (minimum grade of 60% or equivalent); one of Biology, Chemistry or Physics
		Mathematics ⁵				
		Data Science	HL or SL English (minimum grade of 4); one of HL or SL Analysis and Approaches or HL Applications and Interpretations ⁴ ; one of HL or SL Biology, HL or SL Chemistry or HL or SL Physics	Senior level English (minimum grade of 70%); Senior or Junior level Mathematics ⁵ ; one of Senior or Junior level Biology, Chemistry or Physics	English (minimum grade of C); Mathematics (minimum grade of D); one of Biology, Chemistry or Physics	English (minimum grade of 70% or equivalent); Mathematics (minimum grade of 60% or equivalent); one of Biology, Chemistry or Physics
		Environmental Biology and Technology	HL or SL English (minimum grade of 4); HL or SL Biology; HL or SL Chemistry; one of HL or SL Analysis and Approaches or HL Applications and Interpretations ⁴ or HL or SL Physics	Senior level English (minimum grade of 70%); Senior or Junior level Biology and Chemistry; one of Senior or Junior level Physics or Senior level Mathematics ⁵	English (minimum grade of C); Biology; Chemistry; one of Mathematics or Physics **Mathematics with a minimum grade of D is required for admission consideration to Concurrent Education	English (minimum grade of 70% or equivalent); Biology; Chemistry; one of Mathematics or Physics **Mathematics with a minimum grade of 60% or equivalent is required for admission consideration to Concurrent Education
		Environment and Physical Geography ^{2,4}	HL or SL English (minimum grade of 4); one of HL or SL Analysis and Approaches or HL Applications and Interpretations (minimum grade of 3); one of HL or SL Chemistry or HL or SL Physics	Senior level English (minimum grade of 70%); Senior level Mathematics ⁵ ; one of Senior or Junior level Chemistry or Physics	English (minimum grade of C); Mathematics (minimum grade of D); one of Chemistry or Physics	English (minimum grade of 70% or equivalent); Mathematics (minimum grade of 60% or equivalent); one of Chemistry or Physics
		Psychology ^{3,7}	HL or SL English; one of HL or SL Analysis and Approaches or HL or SL Applications and Interpretations (minimum grade of 3); one of HL or SL Biology; HL or SL Chemistry or HL or SL Physics	Senior level English (minimum grade of 70%); Senior level Mathematics ⁵ ; one of Senior or Junior level Biology, Chemistry or Physics	English (minimum grade of C); Mathematics (minimum grade of D); one of Biology, Chemistry or Physics	English (minimum grade of 70% or equivalent); Mathematics (minimum grade of 60% or equivalent); one of Biology, Chemistry or Physics

⁴ One of HL or SL Analysis and Approaches or HL Applications and Interpretations, with a minimum grade of 3 is required for admission consideration to Concurrent Education

⁵ Senior or Junior level Mathematics with a minimum grade 60% is required for admission consideration to Concurrent Education

North Bay is about a 3.5 or 4 hour drive
from Toronto and Ottawa



www.nipissingu.ca/intl
internationaladmiss@nipissingu.ca



NIPISSING
UNIVERSITY

ONE STUDENT AT A TIME

International Office • 100 College Drive, Box 5002, North Bay, ON P1B 8L7
tel: (705) 474-3450 ext. 4433 • tly: (877) 688-5507 • fax: (705) 495-1772
www.nipissingu.ca/intl • internationaladmiss@nipissingu.ca



If you would like to request this publication in an alternative format
please contact the International Recruitment Office at (705) 474-3450 ext. 4433